



President's Message

Susan Ronan

The past two weeks have been a whirlwind of club activity, with the SDBC Spring Show followed by our fundraiser at Safari Park. Jonas Dupuich made the day at Safari Park even more memorable with his critique of a few of the collection's trees. I hope you were able to enjoy the rare opportunity of a bonsai professional sharing his knowledge. The Shohin Study Group, of which I am a member, met with Jonas again on Monday for display instruction along with many constructive suggestions as to how to improve our trees as well as to establish the structure of boxwoods the group is working on. GSBF awarded the group \$200 for the project which we will share with you in Charlie's monthly articles.

Congratulations to our own Matthew Gelacio for being selected to represent our club and the Southern California region in the Joshua Roth Competition to be held at the annual GSBF Rendezvous, October 24-26 in Santa Nella, California. Good luck to you Matthew! Many will recall that Louie Montecillo competed in the same event last year. We're proud of our competitors!

Speaking of the Rendezvous, <https://www.gsbfbonsai.org/rendezvous2025> we would love to invite our members to submit trees for consideration of participation in the All-Club Exhibition at the Rendezvous in October; a \$500 prize will be awarded for the best tree. The club will sponsor one tree from club submissions to be exhibited at GSBF so submit your entries to Susan Ronan asap.

Submissions are also being accepted for the Naka Memorial Exhibition at the JACCA in Little Tokyo. Submission deadline is June 1st. More information can be found at INFO@nakamemorialexhibit@gmail.com

It is with a heavy heart that we announce the passing of long-time member Dan Kitchen. Dan and his wife Sharon have been active members of SDBC for years, often manning the membership table at our shows, and we will miss him. We send our deepest sympathies to Sharon and her family.

"Genius is often only the power of making continuous efforts."

- Elbert Hubbard



*Trident Maple
by John Jackson*

Upcoming meeting

JUNE 1, 2025

Casa del Prado Balboa Park

PRESENTATION

– John Jackson –
*'Developing Display
with Ficus Stock'*
Page 2

BONSAI CLASSES

Page 3

FEATURE ARTICLE

*'Shohin Boxwood
Project...Insect and
watering reminders.'*
By Charlie Mosse
Page 8

SAN DIEGO COUNTY BONSAI TASK CALENDAR

www.sandiegobonsaiclub.com

Visit our website for information on private instructors and other resources to advance your bonsai skills.



Long time member, John Jackson, will be the June presenter for San Diego Bonsai Club's upcoming meeting. As we transition into Summer, the window to do heavy work on tropical tree species such as Ficus begins. Extremely fast growers with very quick time to develop, nearly all Ficus species this author can think of absolutely thrives locally. John is well versed in this species and has developed several trees into incredible display material. Below I've included a link to a walkthrough of John's incredible garden, I highly recommend taking a few minutes to review what he has been cooking up in the lab – a lifetime of dedication to bonsai will yield you similar results.

The Curator of the Bonsai Pavillion at the San Diego Zoo Wild Animal Park, John Jackson has been involved with Bonsai for over 50 years. Having studied with legends such as John Naka and Harry Hirao, John has been a key member for our club since before I was born. We all owe him an almost unpayable debt a gratitude for the bags he has carried all these years to make sure SDBC is the best club in the country.

The demonstration will consist of Burt Dayvi Ficus (*Ficus Burt-Davyi*), secured from local member Eric Jacobson – thank you Eric! John will walk us through the first steps in setting up material for long-term success, starting with root work and getting the trees into grow boxes. I encourage you to start this process at home and immediately put into use what you learned from this meeting. There is no better time than now to develop excellent bonsai!

We have presold two of the demonstration trees, with John working on a third. At the conclusion of this Ficus series, the material John used for the demos will be auctioned off to **one lucky member**. Please, whoever wins this tree, keep in mind we will need it to come back into future meetings for periodic follow-ups. It's vital the members can see its progress from essentially zero into show worthy material, so they can replicate this process at home in their own gardens. Thank you.

John's incredible collection – <https://www.youtube.com/watch?v=QTGIO1hc6CY>

JULY MEETING REPOT EVENT

Olives, bougainvillea, ficus and other tropical species you may have that are ready for a repot. Bring a tree and our many volunteers will help you repot it. Please limit yourself to two (2) CHUHIN OR SMALLER trees (18 inches and under from the lip of the pot). We do not have the proper soil size or quantity to repot very large trees, do not bring them hoping you might get lucky. PLEASE clean your trees PRIOR to the workshop. Soil and assistance will be provided both before and after the meeting but remember: YOU NEED TO BRING YOUR BONSAI TOOLS AND A POT TO REPLANT INTO. This is an opportunity for you to learn to repot, not to have your trees repotted for you – so come prepared to get dirty with your tools.

JUNE MEETING SCHEDULE

| | |
|-------------------|---|
| 8:30am - 10:15am | Beginning Class (<i>Room 104</i>) – Olives with Bob Hale |
| 8:30am - 10:15am | Ficus Workshop with John Jackson |
| 8:15am - 10:15 am | Year Long Intermediate Juniper – Workshop with Gary Jones |
| 9:00am - 11:00am | Tool Sales |
| 9:00am - 10:15am | Bonsai Assistance – Library Open (<i>Room 104</i>) |
| 10:30am - 11:00am | Business Meeting |
| 11:00am - 12:30pm | John Jackson “Developing display with Ficus stock (Ficus Burt-Davyi)” |
| 12:30pm | Raffle & Potluck |

THANK YOU – Susan Ronan, President

- Thank you for your contribution to the raffle table at the April meeting: Scott Flack, Keith and Sue Carter, Cesar Velasquez, “Lyn Stevenson, Dennis Wagner, Camille Newton, Jim Dougherty, Wayne Young, John and Margaret Jackson, John Holloway, Gary Jones, Kevin McLean, and Sean Roozen.
- Thank you for your food donations: Eric Gripp, “Lynn Stevenson, Udaykant Pandey, John and Margaret Jackson and Jaya Kaelberer.

EDUCATION – BILL GRAHAM, VP EDUCATION

Welcome to June and another San Diego summer, gray all morning but nice and sunny in the afternoon. We have had a couple of very hot days, but overall, it continues to be fairly pleasant. Your trees should be pushing growth like crazy right now! Watch what you need to trim to help maintain shape, decide what you want to let run as a sacrifice branch and just enjoy the beauty of growth! Keep an eye on your trees, as it gets warmer, your watering needs will increase.

Spring Beginners Class: *Olea europea* – Olives

April 13 – June 01 – July 13

In the second session of the Beginners Class, you will learn more about the botany of your Olive, different bonsai styles and how to wire the trunk and branches on your tree. It will begin to look more and more like a bonsai. **SOLD OUT!**

Fall Beginners Class: - *Juniperus procumbens* ‘Nana’

August 10 – September 14 – November 09

The third and final beginning class for 2025 will start in August. We have some nice *Juniperus procumbens nana*, the Nana Juniper. These trees are great material for bonsai. This will go on sale at the June meeting. The cost is \$60.00



INTERMEDIATE WORKSHOPS

June – Ficus Salicaria – Willow Leaf Ficus – John Jackson

Many of you have asked me for another ficus workshop. I have obtained some very nice Ficus Salicaria that were grown by Eric Jacobson. These trees are very nice and have a great start toward becoming bonsai. They already have size, movement, taper and nebari. John Jackson, our local ficus expert, has volunteered to lead this class. This will be an exciting workshop! This will go on sale at the April 13 meeting. **SOLD OUT!**

June – 2nd Session of Japanese Black Pine Workshop Series – Fred Miyahara

In this 2nd session you will review your tree, make some design decisions, possibly cut candles and or pull needles, as necessary. **SOLD OUT!**

June 22/23 – Bring Your Own Tree - BYOT – Mike Lane

We have a very exciting opportunity this month! Mike Lane, a Shohin and tropical bonsai artist from Florida will be here. You can view some of his work here: <https://mikelaneshohinstudio.wordpress.com/> and here <https://www.artinlee.org/team/michael-lane/> June is the perfect time to work on your olives, ficus, bougainvillea etc. There are slots available for both Sunday and Monday. The workshops are being held in Room 104 at the Prado in Balboa Park.

They can be purchased on the club website or in person at the June meeting. The cost is \$125.00

This is an intermediate workshop. All students are expected to have their own tools and a moderate understanding of bonsai. You may bring as many trees as you can work on in the full day.

July - Pot Preparation – Mirai Chopsticks – Sumi Ink Top Dressing – Mike Shelly

Mike Shelly will lead a class creating the bamboo chopsticks that are used at Mirai Bonsai by Ryan Neil. He will also teach you how to properly prepare a pot to be used for repotting, setting your screen and tie down wires and lastly how to dye and create top dressing for your trees after repotting. Screen, wire, bamboo, moss and sumi ink will be provided. Please bring a pot to use. If you do not have a pot, please let me know at sign up and we will provide one for you to practice with. This will go on sale at the June Meeting. The cost will be \$45.00

New members are always excited about taking the beginners' classes, and several have asked to be put on a waiting list for the next class. **Please note that sign-up sheets for all classes and workshops are first available at the Bonsai Club meeting TWO months before the classes/workshops are held unless otherwise specified...** We do not start a waiting list until after the sign-up sheet has been put out at the meeting and filled.

A reminder that all beginning classes, workshops and skills classes are taught from 8:30 am to 10:15 am on club meeting days at Balboa Park unless otherwise specified. Also, don't forget to bring any trees that you would like some help or advice on from our excellent bonsai masters at the club. Help is located in the back of Rm 101, right of the stage.

If you have any ideas that can improve our programs or have skills that you would like to share please contact me at wfgraham3rd@gmail.com.

GARY'S JUNIPER CLASS 2025

It is June and it is time to reassemble our class! Everyone is asked to bring your Juniper to the next class so we can look at what has happened since we potted in March. We will evaluate the tree's progress and determine what to do next. Come prepared to learn and ask questions!

How is this class doing so far? I think we are learning the best answers we could ever want to know- about ourselves. We are learning we are capable of growing, of trusting our ability to learn, learning what we don't

know and knowing we can ask and receive an answer that is adult. We are learning to work with others and have fun, learning to support the bonsai member sitting right next to us. We are learning to laugh and enjoy the journey as we deepen our awareness of ourselves and the magic of just doing the work.

What have I learned? I have learned members want to know more and there is a need for what we are doing here, creating levels of competency. There is a huge appetite for learning more personally within the members of this club. The leaders hear it and are working to develop such an educational process. This class is a part of the continuous effort to learn how to better serve our membership.

SAN DIEGO BONSAI PAVILION – by Mark Edgar, Show Display Coordinator



Keith Carter received his 100-hour volunteer service pin from Safari Park and Kathy Wagner received her 5-year service pin. Congratulations to both.

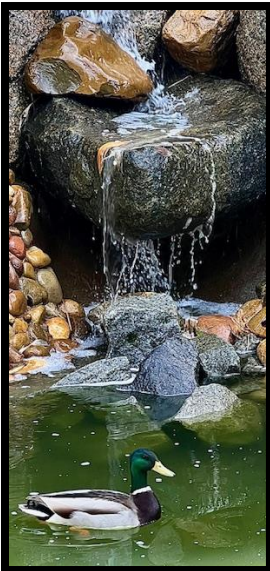
At the mid-April workday Josh and Dennis repotted one of the blue atlas cedars which had just started to grow. This finishes repotting until summer (if that ever comes).

Safari Park volunteers spent the last few workdays assuring the bonsai and the garden were in great shape for the annual San Diego Bonsai Club picnic at Safari Park. The volunteers did a wonderful job! When I arrived early in the morning on May 4, everything looked great after the light rain. Even Cathy's Irises bloomed, and the resident duck was happily swimming around.



The picnic at Safari Park was a success in spite of the weather. We were warm and dry in the Hunte Pavilion. The items donated to the silent auction by attendees raised over \$2000. We were treated to a nice cake to celebrate the 60th anniversary of the San Diego Bonsai Club.

Jonas Dupuich, a bonsai professional visiting from the Bay Area, was very impressed with the garden and the bonsai. After the Hunte Pavilion activities we all went to the Bonsai Pavilion where Jonas used some of the bonsai to emphasize some points about bonsai design. Everyone seemed to enjoy the interaction with Jonas.



APRIL RECAP | Spring 2025 Show Displays – by Mark Edgar, Show Display Coordinator

The April 2025 bonsai show had a variety of different displays including an emphasis on California native bonsai. We had examples of Oaks (Palmer, Blue, Scrub and Coast Live), California Junipers, Western Hawthorn, Pygmy Cypress, Lemonade Berry, Tecate Cypress and Sierra Juniper. The table layout was changed a little by arranging the shohin tables along the first wall. This allowed the shohin group more flexibility for their display. Visitors seemed to pay more attention to the display in this new location. The former shohin table against the south wall displayed a California Juniper bonsai.



The kusamono group put together a dazzling display. The club really has several accomplished kusamono artists. The group, working in the courtyard during the show, created several kusamono for auction Saturday night.



Flowers gave a nice feeling of Spring during our unusually cool weather. Flowers included a bougainvillea, potato vine and many of the accent plants.



One interesting display was for beginner's bonsai. The bonsai on the left is about 8 years after the beginner's class and the one on the right is 1 month after the class. This puts in perspective why bonsai requires time.



Michael Roberts returned to the San Diego Bonsai Cub at the April meeting to continue sharing his knowledge about working with elms, using as examples several of the trees he had worked on during his visit at the January meeting.



Elms are excellent candidates for broom-style designs, according to Michael. They can be worked three to four times a year. In spring, you can push back their growth, and they'll grow less, then you can push them back some more.

To illustrate, he used one of the trees he had dead-headed at the earlier meeting that had sprouted multiple new branches during the spring growing season. He cut it back to a couple of small branches that he wired to start the new design process. He said that he decides how to style based on growing patterns of the tree. Remaining flexible when making design choices is important.

"The tree decides what it wants to give you," he said. "Seldom do you get what you're looking for." For the apex, you should choose a strong and vigorous branch, Michael advised. But be sure to give yourself options in case one doesn't work out.

When trimming, he recommended that you not flat cut and seal a branch if you want to see future growth in that spot. Instead, leave a stub and the tree will push out new branches.

For elms, it's important to build a silhouette that will show off the tree, he said. With a broom-style design, you don't always have traditional bonsai shapes that include a first, second and back branches. Lower branches should be trained to be more lateral, moving more straight out. That helps build ramification for branches going up. The most important step in building ramification is to keep internodes short, he said.



"For elms, the time of year, internode length and branch direction are the three things I'm watching," he said.



View Michael's April presentation [HERE](#) or visit <https://www.youtube.com/watch?v=lm18avsh9N8>



We are in bug season for sure. The last heat wave, though short-lived, started egg hatching in earnest. We had a short cool down but now spring is here, warm days and night temps into the high 50's and low 60's...good weather for most insects. The heat wave was great weather for mites, so check your plants and, also do preventive fan spraying with a hose nozzle. As the weather consistently warms, mites will propagate amazingly fast along with leaf miners and white fly. There are previous Wire articles on the SDBC web site that are listed by content.

Watering has been easy this spring until the heat wave. If you have root bound plants and/or caked soil, be sure to water those plants like all the others and then an extra time or two. Hard soils are generally hydrophobic and can be difficult to properly wet. Or submerge the pot until the bubbles stop coming out. Pull out and tip to drain, especially the shallow pots. Submerging can also be a good time to fertilize by adding it to the submersion tray/bucket. All particles are exposed to the fertilizer increasing the value of the application. I have found this very helpful with easily handled plants, say under 18" especially if the soil is old and compacted.

Keep the pots out of direct sun when possible. The plant foliage will be OK in hot weather, but the roots can cook. Roots naturally are not exposed to that kind of heat, so they have not evolved to survive high heat. Soil in a pot will be at whatever the ambient temperature is throughout the day. An ambient temperature of 90 degrees will have the soil at the same temperature when the pot does not have direct sun on it. At 90 degrees ambient temperature and when the pot is in direct sun, the soil can have a soil temperature of over 110 degrees...your results will vary depending on soil type and condition, pot type and the number of hours in the sun. Pot color may not make that much difference. At about 110-120 degrees, roots are injured or die. That will set the plant back which is a frustration that can easily be avoided.

The soil can be cooled a bit by watering, but the cooling effect does not last very long, especially when the soil is in direct sun. Watering the soil too often can cause overwatering problems. Misting the soil surface and pot helps a bit. The proper solution is to protect the pot and root ball from direct sun on hot days, say over 90 degrees. Grouping pots together is helpful but putting them under a bench or under a tree for the hottest days will help the plant immensely. [Charlie's Corner](#), on the SDBC website, you can find more articles about protecting plants in high heat.

As always, if you have a problem or just need advice, post several photos with notes on the SDBC FB page, email SDBC or bring your tree(s) to a club meeting for better advice.

Japanese Boxwood is a terrific plant with which to create a bonsai. The Shohin Study Group chose Boxwoods for this project for that reason and it is a good plant for the beginner and intermediate levels.

Boxwoods grow well despite our slightly high water pH and alkalinity issues, which limit our ability to lower the pH. They also have good salt tolerance due to our water and fertilizers. Boxwoods are naturally an understory plant, meaning they prefer shade. While they can tolerate full sun, their leaves may lose color—commonly referred to as bleaching—and lose their gloss. They respond well to regular fertilization and require iron and other trace elements several times a year. However, excessive nitrogen can lead to larger leaves and longer internodes. This may be acceptable during the development phase but is undesirable during the refinement phase.

Boxwoods also respond nicely to full or partial defoliation to reduce leaf size and grow shorter internodes. Michael Hagedorn, Professional who owns Crataegus Bonsai in Portland, OR, has a useful article about that and more. I followed his article to try both processes. Worked as advertised. See below for some particularly valuable info on the culture of Japanese Boxwoods.

- <https://crataegus.com/2017/09/01/japanese-boxwood-as-bonsai/>
- <https://crataegus.com/2022/08/12/boxwood-summer-cut-back/>
- <https://crataegus.com/2022/10/28/boxwood-revisit-after-summer-defoliation/>

The best styles are relatively easy to create since Boxwoods lends itself nicely to informal styles. Boxwoods are generally grown in the 'Oak' style...multi-trunk, wide canopy, and long primary branches with good movement, just like our evergreen California Coast Live Oaks, Engleman Oaks, Blue Oaks and of course, the beautiful and deeply furrowed (bark) of the Cork Oak. The style applies to most oaks that can spread out when provided the room.



Boxwood Project, Jonas talking about nuances of plant choice and initial pruning to create a shohin.

Japanese Boxwoods are easily trained in the Oak style regardless of origin. Regardless of style, smaller twigs less than about 1/4" respond fast to trimming since they are usually covered with leaves. Note that they also respond well to the pruning of 3/8" and larger branches where some leaves remain after pruning. TIP--- Making the larger cuts in stages is safer. That is, make 2-3 progressively shorter cuts, over time, allowing the first cut to re-grow new shoots. When the twigging below the first cut looks healthy, make the next cut. When plants are very healthy they have lots of reserves stored. This improves the response to the pruning of thicker branches where most or all of the leaves have been removed with the pruning. Removing lots of leaves stresses a plant. The results of heavy pruning can be iffy, so whenever possible, leave at least a few leaves below a cut.

When the trees were selected for the project, we decided to use nursery stock since most people start with that. The basic steps are as follows:

- ✓ Be sure a tree is healthy---strong growing with good leaf color and gloss.
- ✓ Examine the nebari and roots for an attractive layout, that they are healthy and anything of interest and future look/potential.
- ✓ Examine the trunk for interest, proper taper and potential.
- ✓ Examine the branching to see how they are laid out looking for good spacing, good movement (curving), evil bar branches and badly growing branches that cannot be worked into good placement.
- ✓ Check how low on the branching/trunks that leaves are growing. Boxwoods grown close together and tightly pruned gives rise to inhibited or no low growth. This makes cutbacks for re-growth iffy on branches without the leaves. Trees grown with good spacing and properly pruned to keep them open to allow interior growth are good candidates. This all applies to most tree species.
- ✓ When creating shohin trees, <8" from soil surface to apex, low foliage growth becomes especially important to grow low branching.

The trees were selected for their many low branches, lots of twigging, leaf color and vigor. The lower part of the plant is very important because the goal is to create a shohin, maximum plant height is 8" above the top of the soil. Boxwoods are known for their ability to back-bud easily when cut hard. Great for shohin. Just keep in mind that the finished apex is 8" or less. Therefore, the primary and secondary branching for an 8" tree will be about 5-6" in length. Then, the foliage fills in from there. So, the more small twigging and evidence of buds,

or dormant buds on a branch to be cut, the better chance the branch has of surviving and having back-buds grow in good places. TIP---Fewer leaves means lower water needs for the time being. Taper watering until the buds start growing. The resume normal watering and fertilizing.

Boxwood heart wood is hard and can be carved as jin or shari and lasts for decades. I have two shohin sized boxwoods that have had shari and jin for about 15 years with no decay. Note that the smaller the diameter the jin, the more important it is to preserve the wood. Jin, shari and defoliation will be covered later. Jonas of Bonsai Tonight just published this Blog on spring deciduous pruning and defoliation.

<https://bonsaitonight.com/2025/05/16/spring-work-for-deciduous-bonsai/>

Below are several photos from the initial work on a few of the trees.



Rt. tree is uncut. Multi trunk with low twigging. Lt. tree cut leaving much low twigging to help good, low back budding. Mid tree cut to shohin size, repotted.
Many leaves to help back budding.

1st 3 trees (left to right) have many leaves for good back budding. Right 2 trees may not back bud low but are very strong and could bud ok.



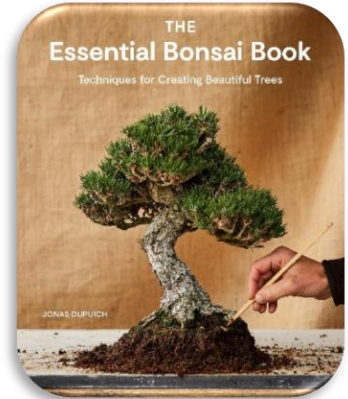
Long branches cut back. Fingers pointing to next cuts to shorten but keep a few leaves to help back budding.



Nebari typical of a boxwood. Tree a bit tall for shohin if back budding is minimal or does not happen. Maybe jin on main trunk end

LIBRARY UPDATES – Sonya Holmquist, Librarian & Historian

We now have Jonas Dupuich's new book, *"The Essential Bonsai Book: Techniques for Creating Beautiful Trees."* The focus is on building a quality collection. Tips include keeping your collection small enough that you have time to work on each tree at the right time; limit yourself to trees with similar watering and light needs (or where you can reasonably group them); most important - work on trees you love. In selecting trees to buy or develop, the trunk is the most important consideration. From there, the book covers many techniques and examples to help you create your own masterpiece.



Everyone's had an extra month to study the resources previously checked out of the library, so please bring them back at the June meeting.

MEMBERSHIP – Cindy Pecile, Vice President

Please welcome the following new club members who joined in March, April, and May 2025.

- | | | |
|--------------------|--------------------------|-------------------|
| Brian Chen | Steven Valdez | Thomas Burke |
| Diego Menendez | Thalia Villasenor | Masoom Otarinia |
| Priscilla Menendez | Amber Valdez | Arian Ahmadi |
| Michael Kitlowski | Andre Valdez | Kathleen Peterson |
| Kathleen Kitlowski | Tejal Chinoy | Edward Kenwood |
| Karoline Kitlowski | Karen Conner | Benjamin Laca |
| Sean Evans | William Pellegrini | Delmy Laca |
| Kirika Evans | Dana Brown | Brandon Kratzer |
| Drew Davey | Claire Turkal | Russell Pitts |
| Miles Ainley | Alex Jones | Richard Herberger |
| Jesse Stevenson | Jim Shadoan | John Brennan |
| Mackenzie Combs | Alejandra Nava-Herberger | |
| Martin Carrington | Sharon Burke | |

MEMBERSHIP RENEWALS: All current members should continue renewing their membership(s) for 2025 if they plan to continue with the club. If you plan to participate in club events – taking classes, traveling on bus trips, volunteering at the Safari Park or Japanese Friendship Garden, volunteering or selling items at the shows, you must be a current member of the club.

You can renew your membership or join as a new member:

- In person at a club meeting. You can pay with cash, check, or credit card.
- On the San Diego Bonsai Club Website using the payment portal.
(<https://www.sandiegobonsaiclub.com/membership.html>)

Club dues will remain at \$30 for an individual and each additional family member is \$5. New members who joined between September 1, 2024, through December 31, 2024, do not have to renew their membership until the end of 2025 for the 2026 calendar year.

If any of your contact information has recently changed or you are unsure as to the status of your membership, please email me at sandiegobonsaiclub@gmail.com.

Current club membership stands at **462** members.

TREASURER'S REPORT – Tom Cylkowski, Treasurer

| SAN DIEGO BONSAI CLUB - TREASURER'S REPORT | | | | | |
|---|---------------------|-------------------|--------|---|----------------------|
| T Cylkowski as of 30 April 2025 | | | | | |
| Accounts have been reconciled with US Bank statements | | | | | |
| All accounts are separate. Expenses/Income cannot be moved between th | | | | | |
| BANK ACCOUNT BALANCES (Balance sheet) | | | | | |
| | Current | | | | |
| Larry Ragle Scholarship Fund | \$44,831 | | | | |
| SDBC Checking | \$97,810.23 | | | | |
| Japanese Friendship Garden | \$3,097.41 | | | | |
| Bonsai Pavilion Checking | \$20,395.37 | | | | |
| SDBC Reserve Fund | \$0.00 | | | | |
| Ragle Reserve Fund | \$0.00 | | | | |
| TOTAL FUNDS: | \$166,134.41 | | | | |
| SDBC Income | | | | | |
| | YTD | Previous | Change | Description | Budget |
| SDBC Reserve Fund Income | - | - | - | SDBC Reserve Fund investment account results | 750 |
| Ragle Reserve Fund Income | - | - | - | Ragle Reserve Fund investment account results | 750 |
| Total Donation Income | 823.00 | - | 823 | Total Donations | 2,100 |
| Total Education Income | 3,048.88 | 1,773.12 | 1,276 | Total Education Income | 15,150 |
| Total Grant Qualcomm | 250.00 | 250.00 | - | Total Grants | 1,500 |
| Total Larry Ragle Scholarship Income | 356.44 | 356.44 | - | Income from services or assets | 1,000 |
| Total Membership Income | 4,317.10 | 3,176.39 | 1,141 | Total Memberships | 11,000 |
| Total Monthly Program | 927.35 | 927.35 | - | Monthly program income | 3,000 |
| Total Raffle & Auction | 2,390.56 | 739.24 | 1,651 | Raffle table or meeting auction income | 12,100 |
| Total Show Income | 20,680.79 | - | 20,681 | Show income | 12,000 |
| Total Special Projects Income | 1,445.85 | 1,445.85 | - | Special projects income | 2,920 |
| Total Tool Sales | 2,711.32 | 2,402.45 | 309 | Total Tool Sales income | 5,600 |
| Total SDBC Income | 36,951.29 | 11,070.84 | | | Total: 67,870 |
| SDBC Expenses | | | | | |
| | YTD | Previous | Change | Description | Budget |
| Total Bonsai Pavilion | 213.72 | 213.72 | - | Safari Park Bonsai Pavilion Expenses | 4,750 |
| Total Education | 3,756.62 | 347.00 | 3,410 | Education program expenses | 13,800 |
| Total Japanese Friendship Garden | 836.02 | - | 836 | JFG operational expenses | 350 |
| Total Larry Ragle Scholarship Fund | - | - | - | Ragle Scholarship Fund expenses | 1,000 |
| Total Library | 80.62 | 80.62 | - | Library expenses | 120 |
| Mas Takanashi Grant | - | - | - | Grant award expenses | 500 |
| Total Membership | 696.60 | 696.60 | - | Membership badges or other expenses | 3,050 |
| Total Monthly Program | 2,286.75 | 1,836.75 | 450 | Cost to host monthly programs | 11,000 |
| Total Newsletter | 343.52 | 253.52 | 90 | Newsletter expenses | 2,050 |
| Total Bank Fees | - | - | - | Total Bank Fees | - |
| Total SDBC Club Expenses | 4,692.51 | 4,604.37 | 88 | Club operational expenses | 8,730 |
| Total SDBC Fall Show | - | - | - | Fall Show expenses | 1,500 |
| Total SDBC Spring Show | 317.00 | 77.00 | 240 | Spring Show expenses | 3,565 |
| Total Special Projects | 4,403.43 | 4,442.24 | (39) | Special projects expenses | 8,850 |
| Total Taxes | 1,290.00 | 1,072.00 | 218 | Taxes | 4,605 |
| Total Tool Table Expenses | 759.36 | 740.33 | 19 | Tool Table expenses | 4,000 |
| Total SDBC Expense | 19,676.15 | 14,364.15 | | | Total: 67,870 |
| Net SDBC Income (Loss) | 17,275.14 | (3,293.31) | | | |

SDBC Board Meeting Minutes – May 13th, 2025 6:30pm start – President Susan Ronan called the Zoom meeting to order at 6:30pm

In attendance: Susan Ronan (President), Matt Jillson (First VP), Bill Graham (VP for Education), Phaedra Ehring (VP for Special Projects), Tom Cylkowski (Treasurer), Cindy Pecile (Membership), Carla Marasco (Secretary), Ignacio De La Torre (Past President)

General Topics

- Oct 4, 2026 is available in room 101 or plan a picnic if Bill's event doesn't take place, all have agreed to continue with a picnic in October instead of a meeting.
- Consideration of limiting Beginner's classes to one per year or until class is filled. No change at this time, will revisit at a later date.
- Consideration of pre-requirements for enrollment in meeting day workshops. No change at this time, will revisit at a later date.
- Acceptance of Treasurer's report and minutes was unanimously approved.

Board reports

Tom Cylkowski (Treasurer)

- Spring show numbers gross \$21K (After expenses approx. Net \$2.9K) Lower amount due to lower amount of auction items and lower attendance this year.
- Talked about investing small amounts of money into investment account. Will need to have 5 board members' signatures for approval on opening investment account.
- Looking to purchase a new terminal for shows for transactions, previously approved. Cost will be more than expected and may be closer to about \$300 dollars for a square terminal. A motion was made to purchase this device and all board members were in agreement to purchase the square terminal. Motion passed.

Matt Jillson (First VP)

- Jun – John Jackson Ficus
- Jul – Traveling Artist Cesar Ordonez, Olive Yamadori Development & Summer Report Session
- Aug – Michael Roberts, Developing Show Worthy Trees (Part 3)

Ignacio De La Torre (Past President)

- N/A

Bill Graham (Education)

- June 22-23 Mike Lane workshops (tropicals)
- Oct 19-20 Hiroyoshi Yamaji workshops (Bonsai Blast Demo) & another presenter
- Takanashi Grant program is pending completion of updated structure. Further discussions will be had in the coming months. / New teachers to be a separate qualification.

Carla Marasco (Secretary)

- N/A

Cindy Pecile (Membership)

- 463 Current Members
- 170 members signed up for the May picnic (unsure of how many were actually in attendance)

Phaedra Ehring (Special Projects)

- Nisei week is in August. Sign-ups are starting in June
- Fall Show coming up in September (continued 60th Anniversary Celebration) Sign-ups will begin soon
- Working on a list of steps for new members to follow to get started in bonsai

End of Meeting 8:12pm

UPCOMING MEETINGS AND ACTIVITIES – DATES AND TIMES ARE SUBJECT TO CHANGE

| MONTH | DATE(S) | LOCATION | ROOMS |
|-------------------|-------------------------|----------------|-------------|
| June meeting | June 1 st | Casa del Prado | 101 and 104 |
| July meeting | July 13 th | Casa del Prado | 101 and 104 |
| August meeting | August 10 th | Casa del Prado | 101 and 104 |
| September meeting | Sept. 14 th | Casa del Prado | 101 and 104 |
| October meeting | Oct. 19 th | TBD | TBD |
| November meeting | Nov. 9 th | Casa del Prado | 101 and 104 |
| December meeting | Dec. 14 th | Casa del Prado | 101 and 104 |

*SDBC meetings are subject to availability of the rooms in Casa Del Prado. Our preferred date for the second Sunday of each month sometimes conflicts with other clubs' shows or special event, so we choose an alternative day.

Fall show: set-up September 26, show September 27-28

Japanese Friendship Garden bonsai workdays: Wednesdays; contact Neil Auwarter for volunteer information.

San Diego Zoo Safari Park Bonsai Pavilion workdays: First and third Saturdays of each month; contact Mark Edgar for volunteer information.

Statewide events. See the Golden State Bonsai Federation <http://www.gsbfbonsai.org/>

SAN DIEGO BONSAI CLUB BOARD

| | |
|--------------------|----------------------|
| President: | Susan Ronan |
| 1st Vice President | Matt Jillson |
| Secretary: | Carla Marasco |
| Treasurer: | Tom Cylkowski |

| | |
|----------------------|----------------------------|
| VP Special Projects: | Phaedra Ehring |
| VP Education: | Bill Graham |
| VP Membership: | Cindy Pecile |
| Past President: | Ignacio De La Torre |

Appointed Positions

Japanese Friendship Garden

| | |
|--------------------------------------|-------------------------------------|
| Refreshment Coordinator: | Adrian & Tony Mangina |
| Publicity: | Keith Carter |
| Sunshine Chair: | Susan Baker |
| Librarian & Historian: | Sonya Holmquist |
| Help Corner | John Voss |
| Tool Sales Manager: | Brenda Myers Jake Shaver |
| YouTube & Photographer: | Carla Marasco |
| Audio Visual: | Michael Bird |
| Webmaster: | Janice Hale |
| Coordinator of Education Curriculum: | Bob Hale |
| The Bonsai Wire Editor: | Sean Roozen |

| | |
|-----------------|---------------------------|
| Bonsai Curator: | Neil Auwarter |
| Liaison: | Barbara French-Lee |

Japanese Friendship Garden bonsai workdays:
Wednesdays; contact Neil Auwarter for volunteer information

Safari Park Bonsai Pavilion

| | |
|--------------------|----------------------|
| Curator: | John Jackson |
| Assistant Curator: | Dennis Wagner |
| Liaison: | Mark Edgar |

San Diego Zoo Safari Park Bonsai Pavilion workdays: 1st and 3rd Saturdays of the month; contact Mark Edgar for volunteer information

See the [club website](#) for contact information.

Please note: *The Bonsai Wire (TBW) is published 12 months of the year, by the San Diego Bonsai Club (SDBC). TBW and the SDBC logo are properties of SDBC. Articles are provided by SDBC members. Any articles submitted by non-SDBC members—if published—become property of SDBC. All submitted articles are subject to editing. No part of this publication may be reproduced without written permission from the SDBC.*



*June
2025
The Bonsai Wire*

Return Service Requested

San Diego Bonsai Club
P.O. Box 86037
San Diego 92138