



President's Message

Susan Ronan

Up until now the sun has come out only now and then in my coastal garden, with just enough recent heat to turn on the Ficus that have been growing only slowly until now. The resistance of the hawthorn I talked about last month to fungus is improving with spraying but not entirely. Still a few yellow and spotted leaves to keep my attention.

Tom Lau paid a visit to my garden for an interview for his YouTube channel recently. He was quite delightful, and I enjoyed the time I spent with him. He has an easy going and informal style and I look forward to seeing it posted sometime in August. If you have an interest in hosting Tom in your garden, you can contact me through our website www.sandiegobonsaiclub.com and I'll give you his contact information.

Speaking of contact information, due to the tremendous amount of scam emails board members have been receiving recently, we are removing email addresses from the Wire but can be contacted through the Club website Contact page. www.sandiegobonsaiclub.com

Jaya Kaelberer our, irreplaceable Treasurer, has indicated that she would like to retire from her position, and we are looking for someone to take on the Board position of Treasurer. The ideal candidate would have some QuickBooks bookkeeping experience and have been a member for 3 to 5 years. If you think you can serve the Club in this very important role please text or call Fred Miyahara, head of the nominating committee, at (619) 316-8189.

While I was attending our last meeting my husband Bill sent me a video of bees swarming outside my garden shed and sure enough, they decided to set up housekeeping (this is the third time!) and the bee removal service has been called. I love watching them! So focused on their roles, a few coming and going but the majority working to build the hive. No sign of the comb but the overall mass grew daily so it's clear there was *something* going on underneath the mass of bees. By the time Jeff, the bee remover, arrived, the bees had started to bump me as a warning to keep my distance. I really enjoyed watching the removal, Jeff was kind enough to answer all my questions. Interestingly, any



Potential Bonsai seen at Peter Lougheed Provincial Park Alberta Canada

Upcoming meeting

August 11, 2024

10:30 a.m.

Room 101, Casa del Prado

Balboa Park

See Page 2

Classes: *see Page 4.*

"That's the great secret of creativity. You treat ideas like cats: you make them follow you."

-Ray Bradbury

Bonsai Task Calendar for San Diego County

www.sandiegobonsaiclub.com

Visit our website for information on private instructors and other resources to advance your bonsai skills.

workers who don't go with the queen hang around for a few days but then will fly back to their original hive. Almost all bees in California have been Africanized but having been bred with European queens are now much less aggressive. He even pointed out the queen who is recognizable being the largest more darkly colored bee in the hive. See pictures.



August 11 meeting agenda: Room 101, Casa del Prado, Balboa Park

MEETING SCHEDULE

8:30 am - 10:15 am	Beginner Class	Room 104
9:00 am - 10:15 am	Workshop with Lindsay	Room 101
9:00 am - 11 am	Tool Sales	Room 101
9:00 am - 10:15 am	Bonsai Assistance	Room 101
9:00 am - 10:15 am	Library Open	Room 104
10:30 am - 11:00 am	Business Meeting	Room 101
11:00 am - 12:30 pm	Presentation	Room 101
12:30 pm -	Raffle and Refreshments	Room 101



To prepare for our upcoming Fall show, we have asked Lindsay Shiba to return to the San Diego Bonsai club on August 11th to discuss with us show presentation design concepts.

So, you've spent the better part of a decade plus carefully growing your prized tree. You made sure critters, fungus or the heat didn't get the better of your creation and now you are ready to show the World the hard work you have put in - the time has come to display this beauty in the club show. One of the many concepts that might not have crossed your mind too much on this journey to create a finished bonsai is how to display it.

Questions of what time of year is it, what's an appropriate accent plant, does that jive with the time of year it is, what are scrolls used for, do I need a stand or a jita. All this can seem overwhelming, and it probably is if you try to digest all this at once. Lindsey will be discussing these display components and how to use them to accentuate and make your bonsai display at its best. Below I have included a link to an article written by Jonas Dupuich about the basics to display design you can review prior to this meeting.

A second-generation Bonsai Sensei, Lindsay Shiba started his bonsai journey in 1970 at his father's Nursery, Mt. Fuji Garden Center in Upland, California. Lindsay did his formal training with Khan Komai, Harry Hirao and later with John Naka. Lindsay is a past President of California Bonsai Society, an active demonstrator, teacher, and a very respected Bonsai nurseryman in Southern California. He is currently the Vice President for Baikoen Bonsai Kenkyukai in the Los Angeles area.

Lindsay will offer a small consultation workshop with six students before his presentation. The morning session will run from 9:15 a.m. to 10:15 a.m. Students can bring one or two trees as well as necessary tools and wire to consult with Lindsey on design concept and branch development. Cost is \$20 per person, please email me – questionablecooking AT yahoo DOT com – to get on the list; first come, first fill. (Sorry, trying to prevent google bots from picking up my email address to spam me.)

Bonsai display basics w/Jonas: <https://bonsaitonight.com/2023/11/26/bonsai-display-basics/#:~:text=Basic%20display%20elements%20include%20trees,display%20space%20without%20overcrowding%20it>.

August is here, it is hot, and it continues, to be hot! Keep an eye on your watering and ensure that your trees do not dry out. In my neck of the woods, it continues to be in the mid 90's and higher. When it gets like this, you may have to water twice a day. Check your soil to see whether it needs watering or not. There has also been wind lately. This will dry your trees out just as bad as the excess heat.

Fall Beginners Class – *Juniperus procumbens nana*- 'Nana Juniper' – Ignacio De La Torre

August 11 – September 15 – November 10

The third and final beginning class for 2024 will start in August. We have some nice *Juniperus procumbens nana*, the Nana Juniper. These trees are great material for bonsai. **SOLD OUT!**

Intermediate Workshop:

August – *Ficus salicaria* – 'Narrow Leaf Ficus' - John Jackson

Many of you have asked me multiple times for a *Ficus* workshop. I have finally obtained some very nice *Ficus salicaria* that were grown by Eric Jacobson. These trees are very nice and are a great start to becoming a bonsai. They already have size, movement, taper and nebari! John Jackson, our local *ficus* expert has volunteered to lead this class (back to back workshops from John!!) This will be an exciting workshop! **SOLD OUT!**

September – Heavy Bending – *Juniperus procumbens nana* – 'Nana Juniper' - John Voss

Back before COVID we had a workshop scheduled to practice some heavy bending on junipers. Sadly, we were unable to have it due to the lock down. Those trees ended up being used for another workshop. John Voss has procured some 1" + trunk *Procumbens* and will lead this class. It should be very interesting and informative. John will teach you how to prepare and apply raffia to a trunk/branch and the techniques for bending without breaking. The cost is \$85.00.

Advanced Workshop

October 20, 2024, BYOT and DEMO – Bjorn Bjorholm – Yannick Kiggen

We have a rare, incredible and exciting event happening on October 20, 2024. International bonsai artists Bjorn Bjorholm (now residing permanently in Kyoto, Japan) <https://www.bjornbjorholm.com/> and Yannick Kiggen (Hamont-Achel, Belgium) <https://www.yama-bonsai.be/> will be here to conduct both a demo and a workshop. This is an opportunity to see two of the top bonsai in the world artists up close. We will be combining our monthly meeting with this day and are planning a full day of bonsai, including our annual picnic and silent auction. Stay tuned for more details to follow as the year progresses!

New members are always excited about taking the beginners classes, and several have asked to be put on a waiting list for the next class. **Please note that sign-up sheets for all classes and workshops are first available at the Bonsai Club meeting TWO months before the classes/workshops are held unless otherwise specified.**

We do not start a waiting list until after the sign-up sheet has been put out at the meeting and filled.

A reminder that all beginning classes, workshops and skills classes are taught from 8:30 am to 10:15 am on club meeting days at Balboa Park unless otherwise specified. Also, don't forget to bring any trees that you would like some help or advice on from our excellent bonsai masters at the club. Help is located in the back of Room 101 to the right of the stage.

If you have any ideas that can improve our programs or have skills that you would like to share, please contact me.

Bonsai Pavilion at the San Diego Zoo Safari Park: Mark Edgar, Liaison

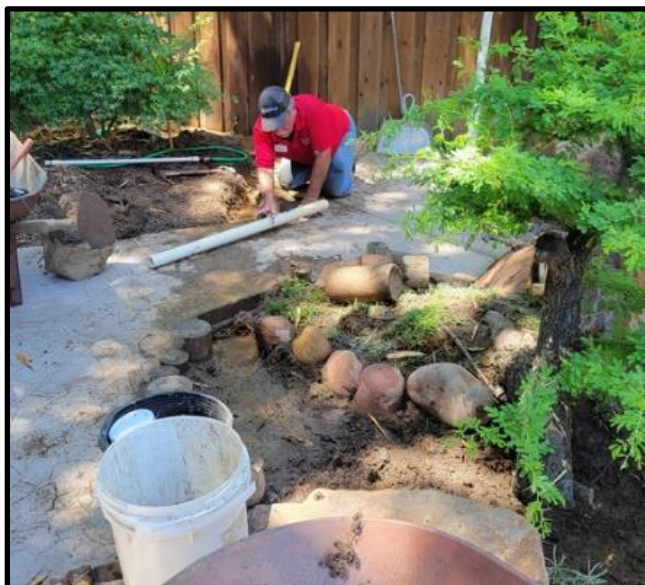
It's bamboo shedding season at the Bonsai Pavilion. After a 3-week absence from the Pavilion, volunteers arrived for a workday 7/6 to find the landscape areas and some bonsai covered with dead bamboo leaves. Rakes, a blower and elbow grease cleaned it up and produced 70 gallons of leaves. In a couple of months we should be free of the bamboo curse.



Ken Zito celebrated getting his 500-hour volunteer pin from Safari Park by trimming the very lethal acacia tree.



Charlie Mosse shows the twin trunk olive who's boss.



Dennis Wagner decided that we needed a drain to prevent part of the landscape from flooding. Sooooo, Dennis dug a hole. Dennis put in the drain, and we re-landscaped the area to better define the dry riverbed look.

The Fall Show, scheduled for September 27 and 28, is only two months away. The show set up and bringing in show trees and sale plants occurs Friday the 26th and continues on Saturday and Sunday. To help prep for the show, it is recommended to listen to a podcast named 'The Bonsai Wire'. Jonas Dupuich, John Eads, Michael Hagedorn, Carmen Leskoviansky, Andrew Robson, and Eric Schrader hosted it. Two of the hosts, Jonas of Bonsai Tonight and Andrew Robson of Rakuyo Bonsai, posted **7 of their top tips** for preparing trees for a show.

There are other recent posts about the **Pacific Bonsai Expo in October** that discuss the jury (tree selection) and judging processes. Particularly useful information is there, too. The PBE is the west coast equivalent of a national level show like U.S. International Bonsai Show and Exhibition in Rochester, NY. Both are held every two years, but in alternate years.

Keep doing work on warm weather trees like Bougainvillea, Ficus, Olives, Brazilian Rain trees and other sub-tropicals and tropicals. Heavy work can still be done in August which will give the trees time to recover and be ready for the cooler months ahead. Try to get the repotting, grafting, air layering- cuttings done now. Lighter work like trimming can be done well into September.

The weather has been very warm to hot, clear skies, the sun high in the sky and days are still long with hot sun into the late afternoon. That is a lot of prolonged and potentially damaging heat for our trees, especially in the hotter areas. Remember that tree foliage has evolved to manage hot temperatures and direct sun. Roots have not since they evolved in the ground where temps are more stable and considerably cooler.

Be sure trees are thoroughly watered: First wet the surface with a quick pass to pre-moisten the surface and soil under the surface. Then go back and make 2-3 soaking applications thoroughly soaking the soil. Important water fact: Water will take the easiest path through the soil and can miss some areas even after one thorough application. This is an important reason for multiple applications of water or doing submersion.

Pay close attention to:

- Bill Graham advised us that you may need to water twice a day. Check plants in mid to late afternoon on the very warm and/or windy days.
- Recently repotted trees with looser/coarser soil mixes, it can be difficult to properly wet all of the new particles.
- Very root bound trees needing repotting usually have compacted soils which are more water repellent and harder to thoroughly wet.
- A repotted tree with a hard portion of old root ball remaining. The old soil greatly differs from the newer soil and can often repel water.

An extra watering pass on recently repotted trees helps to wet the new particles better. Try 'drip watering' compacted root balls which can be a hard, hydrophobic mass.

Cover pots on hot days over 90: This will keep the pots from getting too hot in the sun and transferring that heat to the roots, possibly injuring the fine root hairs and root tips. Temperatures over 100 **can** damage roots depending on the pot material, pot color, sun angle, glazed or unglazed container and the duration of exposure of the container to direct sun. Depending on the species, tree health and the **duration** of hot soil temps, root damage **will** occur when soil temps get over 120-130 degrees. Root injury can range from losing some root hairs to killing all of the root hairs and even small roots. When the latter happens (which is hard to determine at the time) you will not find out until later, with conifers and tougher broadleaf evergreens, when the trees stop growing and/or eventually lose color. More sensitive trees like maples, hornbeams etc. will quickly show burned leaves and dead tips on fine twigging. Eventually older tertiary, secondary and even primary branches can die back or die off. Therefore, protecting containers is the best way to prevent root injury. When roots are not happy, nobody's happy.

Cover pots with any breathable opaque material like burlap, frost/heat protection fabric, old t-shirts, old sheets or shade cloth. Those materials allow water to pass through. Thin styrofoam, thin insulating materials and aluminum foil are also good protection but are not as convenient when watering. Trees can also be moved under shade trees, bushes or other shade, or can simply be put on the ground under shelves/tables during the heat of the day. The trees can remain on the ground under the tables for a few days without causing any problems. Double potting is also incredibly good. E.G., placing a 6" pot into an 8"-10" pot, surrounding and covering the 6" pot with pumice. If the pot is covered with a material of any kind, you will need to move some material aside to check for moisture. Once you learn the routine and speed of drying, it becomes easier to do. When you water the plant, also water the pumice surrounding the pot.

Installing shade cloth: This is the best method of protection. Listen to this informative blog post on shade cloth by Jonas Dupuich of Bonsai Tonight and Andrew Robson of Rakuyo Bonsai. <https://www.bonsaiwirepodcast.com/1276571>. Michael Hagedorn of Crataegus Bonsai also has 4 short posts on his blog page about shade cloth. <https://crataegus.com/blog/>. Scroll down to find the posts. They are not in listed order. Scroll down about 10 or so posts and working back to the top you will see the 4 posts.

The soil will be at least at ambient temperature and above that on the sunny side. There is about a 10-20 degree difference in temperature between the sunny side and the shaded side of a container. Try using a digital meat thermometer to learn the nuances of temperature variations in the soil, especially on hot days.

Overhead water your trees: Can tree foliage be watered during the day when it is hot? Urban legend says to not water foliage on hot days when in the sun. The claim is that water droplets will act like a lens and focus the sun's rays on the surface of the leaf. **Wrong!!** If the droplets did focus the rays, the focal point would be below the leaf.

Julian Tsai did a deep dive into this question that many people ask about. As simple as it sounds, it is a very complex subject with very many variables. So, here is a concise summary from his research:

*"In 100+ temperatures on temperate species **do not mist the foliage** of your trees. If you do water the foliage, **drench the foliage** and ensure the water coming out of your hose is not warm or hot. Sub 100 temps it is highly unlikely that watering your foliage will burn the leaves. **In hot weather it is likely more effective to keep trees well-watered and roots cool as well as utilize shade cloth, so that the plant can continue to transpire and cool itself.**"* (I added some bolding for accent.) During the years I managed nurseries, we hosed off many plants during peak heat and had no problems. If we were concerned about thinly leafed plants, deciduous or evergreen, after hosing them off we shook off the excess water. It is simply best to protect your trees from the hot part of the day. This is just so much better for the trees, anyway.

Keep trees healthy by continuing fertilizing and performing insect/disease control. Several members have asked if it is safe to fertilize and/or apply insecticides and fungicides in hot weather. Yes, it is safe but here are a few tips to prevent problems when it is very hot, say over 90 degrees.

- **Be sure the soil is moist before applying any chemicals to the soil or foliage.** It is best to water several or more hours before application to assure the plant is hydrated.
- Fertilize at ½ doses but twice as often. This reduces the total amount of fertilizer salts in the soil at one time, more like mother nature. This applies to liquid or dry fertilizers, but not so much for dry organics. Controlled release fertilizers like Osmocote and Apex release faster in warm weather so reducing the amount applied can be helpful.
- Soil drench applications of insecticides must still be applied per the label to get reliable results.

When applying chemicals to foliage, follow label instructions for the concentration to be applied. Apply chemicals to the tree in the evening. This reduces the possibility of chemical burn vs applying in the morning of a day forecasted to be over 80 degrees. Another benefit is that the chemicals will last longer on the leaves and twigs before the sun and heat starts breaking them down. This makes them more effective. If you are concerned about leaf burn, you can give the tree a light "rain" in the mid-morning to dilute the chemical on the leaf.



Liliana Marcelo Tello

Our partnership with the California Bonsai Society (“CBS”) continued as we were joined by international bonsai artist Liliana Marcelo Tello Ortiz who hails from Bogota, Colombia. Our partnership is thanks to CBS President Bob Pressler who joined our presenter.

Liliana, a doctor turned bonsai professional, has spent much of her bonsai career focusing on tropical varieties. For her presentation, the club provided a large tiger bark ficus acquired from Eric Jacobson who grew the thick-trunked tree. According to Liliana, tiger bark ficus is a great species for bonsai as it provides short internodes and one can build ramification in a short amount of time.

Liliana began her work on the tree by scraping away dirt at the base and examining the nebari, the root flare at the base of the tree, which would help her to decide on the front of the tree (the attendees helped to make the selection.) She said that the base is the most important part of the tree as branches can always be grown. When selecting the front, look for the widest part of the base along with the section of the base with the most roots. A trick when there are not enough roots is to split a large root in half to expand the root base. One can use a chisel to split the root and insert a chopstick to separate the two pieces. Cover the roots with soil and roots will grow from the fresh cuts.

Ficus in general need good drainage as they do not like wet soil. Liliana also noted that ficus respond well to cuts and tend to heal well although the bark can be sensitive. She reminded the group that spring and summer are the best time to make cuts and perform pruning although in a warm environment the work can be done most of the year. To help close wounds, leave branches in place which will draw resources to the cut site. The branches can be removed as cuts heal. And large cuts can be treated by making a slight indentation, applying cut paste, and covering with aluminum foil which provides heat to the cut site.

Liliana reminded us that ficus can be defoliated but repotting should not be done at the same time. “When repotting, work on only the roots. Do not remove leaves,” she said.

As with most trees, remove downward-facing as well as inward-facing branches. Branches can be repositioned by using a guy wire rather than wiring a branch because of the sensitive nature of the bark. If a branch is to be wired, one can wrap paper around the wire before applying it to the tree. She showed this method during her presentation by cutting a piece of paper into strips and wrapping it around the wire (see the paper-wrapped wire in one of the attached photos.)

Another set of tips from Liliana: When making large cuts, slope cuts away from the front toward the back of the tree leaving the front higher. This makes the cuts less visible. And, when possible, grow trees in wooden boxes which tend to hold a little moisture and allow for good oxygen exchange. The final tip: The health of the tree is the most important item. Work only on a healthy tree.



The tree was auctioned off following the demo and Brenda Crann was the winning bidder

A special thanks to our videographer for the day, Carla Marasco, and our AV director, Wayne Lord.

July Outreach: San Diego County Fair, By Ignacio De La Torre



Kyle Icke, former board member, represented the SDBC during three hour-long bonsai demos held on the O'Brien stage at the 2024 San Diego County Fair.

With thanks for your generous contributions: by Susan Ronan

Raffle Table Donation:

Adrian and Tony Mangina, Fred Miyahara, Susan Ronan, Eric Jacobson, Charlie and Sylvia Mosse, Julia Chow, Cindy Pecile, Dennis and Kathy Wagner, John Jackson, SDBC, Gary Jones, Christian Reha.

Refreshment Donations:

Adrian and Tony Mangina, Jenny K Chin, Jaya Kaelberer, Bernard Blocker, Brian Jackson, John and Margaret Jackson, Marylou and Don Montross.

Membership: Cindy Pecile, Vice President, Membership

Please welcome the following new club members who joined in June and July 2024.

Stephen Jennings
Jasmine Dizon
Paul Stanford
Joshua Dinwiddie
Mike Campbell
Daniel Ke

Kevin McLean
Cody Dorich
Colton Dorich
Georgia Dorich
Laurie Forgy
Frances Mahon

Henry Peralta
Lori Hargrove
Jessica Pulido
Robert Bruder
Kahlil Pawlicki

If you plan on participating in certain club events – taking classes, traveling on bus trips, volunteering at the Safari Park or Japanese Friendship Garden, volunteering or selling items at the shows, you must be a current member of the club. You can renew your membership or join as a new member:

- In person at a club meeting
- On the San Diego Bonsai Club Website
(<https://www.sandiegobonsaiclub.com/membership.html>)
-

Club dues will remain at \$30 for an individual. Each additional family member is \$5.

The current 2024 Club Membership stands at 537.

Upcoming special events: Phaedra Ehling , VP Special Projects

August 2024 – Nisei Week bus trip

On **Saturday, Aug. 17**, we will charter a bus to attend the Nisei Week Japanese Festival (<https://niseiweek.org>). A bonsai exhibition will be part of the festival, held in the Little Tokyo District of downtown Los Angeles.

September 2024 – Fall Show and Sale

The Fall Show and Sale will be held **Saturday, Sept. 28 & Sunday, Sept. 29**

Treasurer's Report: Java Kaelberer, Treasurer

SAN DIEGO BONSAI CLUB - TREASURER'S REPORT						
Java Kaelberer as of 30 June 2024						
Accounts have been reconciled with Union Bank statements						
BANK ACCOUNT BALANCES (QuickBooks)						
	Current					
Larry Ragle Scholarship Fund	\$8,697					
SDBC Checking	\$57,427					
CD \$20K 02/28/24	\$20,329					
Japanese Friendship Garden	\$3,933					
Bonsai Pavillion Checking	\$20,960					
TOTAL FUNDS:	\$111,346					
SDBC Income						
	Current	Previous	Change	Description		budget
Total Donation Income	\$3,180	\$1,445	\$1,735	\$1,735: Larry Ragle Scholarship fund		\$ 1,750
Total CD interest	\$329	\$244	\$85	Interest income		
Total Grant Qualcomm	\$500	\$500	\$0	no change from previous month		\$ 500
Total Larry Ragle Scholarship Income	\$7,130	\$0	\$7,130	\$6,962: Sale of pots & trees, \$168: sale of tree		
Total Education Income	\$6,794	\$4,536	\$2,258	\$1,286: beginner class, \$822: workshop, \$150 tree sale		\$ 13,100
Total Membership Income	\$6,874	\$6,397	\$477	Club dues		\$ 11,000
Total Monthly Program	\$450	\$410	\$40	Mike Pistello workshop		\$ 320
Total Raffle & Auction	\$7,704	\$6,712	\$992	\$210: club mtg auction, \$782: club mtg raffle		\$ 17,900
Total Show Income	\$4,989	\$4,989	\$0	no change from previous month		\$ 12,500
Total Special Projects Income	\$2,844	\$2,844	\$0	no change from previous month		\$ 2,000
Total Tool Sales	\$2,629	\$2,089	\$540	Tool sales		\$ 5,200
Total SDBC Income	\$43,422	\$30,166				\$64,270
SDBC Expenses						
		Previous	Change			budget
Total Bonsai Pavillion	\$3,777	\$2,777	\$1,000	\$500: pot for pavillion tree, \$500 4 shohin trees bought from Ragle fund		\$ 8,500
Total Education	\$4,429	\$4,186	\$243	\$139: mesh,ink,paper, \$104: Lunch for Pistello workshop		\$ 11,050
Total Japanese Friendship Garden	\$0	\$0	\$0	no change from previous month		\$ 450
Total Library	\$95	\$95	\$0	no change from previous month		\$ 200
Mas Takanashi Grant	\$0	\$0	\$0	no change from previous month		\$ 500
Total Membership	\$1,193	\$63	\$1,130	Badges for J,F,M,A,M,J!		\$ 1,500
Total Monthly Program	\$3,183	\$1,549	\$1,634	\$2325: Pistello wkshp, \$100: food, \$60 raffle tree		\$ 9,750
Total Newsletter	\$1,104	\$954	\$150	\$45 mailchimp fees, \$59 newsletter copies June, \$46: newsletter copies July,		\$ 1,400
Power of One Scholarship						\$ 320
Total Reconciliation Discrepancies	\$337	\$0	\$337	Decrements duplicate cheque accepted by bank in mistake		
Total SDBC Club Expenses	\$5,745	\$4,784	\$961	\$961: cheques for 4 accounts to update from Union Bank to US Bank		\$ 5,920
Total SDBC Fall Show	\$463	\$463	\$0	No change from previous month		\$ 800
Total SDBC Spring Show	\$3,047	\$3,047	\$0	No change from previous month		\$ 3,650
Total Special Projects	\$5,629	\$4,629	\$1,000	Sponsorship for Pacific Bonsai Expo		\$ 10,850
Total Taxes	\$477	\$477	\$0	No change from previous month		\$ 4,380
Total Tool Table Expenses	\$2,239	\$2,084	\$155	\$417: wire, tools		\$ 5,000
Total SDBC Expense	\$31,719	\$25,108				\$64,270
Net SDBC Income (Loss)	\$11,702	\$5,058				\$0
Our income to date has to catch up to budget by	\$20,848 k					
Our expenses are less than the budget by	\$32,551 k					

President – Susan Ronan – Intro

- Fred Miyahara is accepting names for Larry Ragle scholarship. Recipient names will be drawn in September.
- We are in need of refreshment coordinators for next month's meeting. If interested, please contact Susan Ronan.
- New Hats are being ordered. There are several styles. If you would like to order, send an email to Ignacio De La Torre.
- Sat., Aug 3rd Fred Miyahara will have a tree & pot sale of Larry Ragle items. You must have an appointment with Fred to attend. There are trees and pots of all price ranges (\$80-\$750)

Board reports & Additional Info

- 1st Vice President (Matt Jillson)
 - Next month's presenter will be Lindsay Shiba on bonsai show displays. (BYOT session)
- VP Special Projects (Phaedra Ehring)
 - The Nisei week bus trip to Little Tokyo in LA is Saturday, August 17th from 8am-8pm. There will also be a stop at a nursery. We are looking for suggestions of nurseries of interest. Sign-ups are being taken at the meeting and also online for \$40.
 - We are now accepting Fall Show sign-ups. The show will be held September 28-29th. We will also need setup volunteers for Friday, September 27th. Phaedra is looking for leads for each area as well (4hr blocks). This will help with the flow of the event.
- Treasurer (Jaya Kaelberer)
 - The financials are looking good in all four of the club's accounts. The majority of income came from Larry Ragle donations, sales table & education. The main expenses were the Expo donation, name badges & Mike Pistello fees.
- VP Education (Bill Graham)
 - The upcoming education is as follows:
 - Aug-Narrow Leaf Ficus Workshop w/John Jackson SOLD OUT
 - Sept/Oct/Nov Beginner Class Series by Ignacio De La Torre (Procumbens Nana) SOLD OUT
 - Sept-Heavy Bending Workshop by John Voss \$85 6 spots available
 - Oct-All Day Bonsai Event (Meeting/Picnic/Auction/Vendor Sales) with Bjorn Bjorholm/Yannick Kiggen event Oct 20th Workshops for advanced members will go on sale at September Meeting (6 spots available for each workshop). We will need a lot of volunteers for this event.
 - Nov- Jason Saito will do a Saikei Workshop (Soil/Rock/Tree Planting)
 - Dec – Holiday Styling Competition
- VP Membership (Cindy Pecile)
 - Our membership is currently 534 members. We will begin accepting dues for next year's membership renewals in September
- Safari Park (John Jackson)
 - Come visit the Park and see 60+ trees that are on display there. Members are able to volunteer at the Safari Park after being an active member for at least 1yr. Volunteer workdays are on the 1st and 3rd Saturdays each month.
- Japanese Friendship Garden (Neil Auwarter)
 - Stone carver Taka Saida will be doing a demo in late August or early September
 - A beginner class will be held August 18th for 24 students with help from SDBC teachers. Cost is \$100 or \$95 for JFG Members.

Presentation by Liliana Tello Ortiz on branch selection and design of a tiger bark Ficus, etc

July 16 , 2024, Board Meeting Minutes: Carla Marasco, Secretary

President Susan Ronan called the Zoom meeting to order at 6:33pm

In attendance: Susan Ronan (President), Matt Jillson (First VP), Bill Graham (VP for Education), ~~Phaedra Ehring~~ (VP for Special Projects), Jaya Kaelberer (Treasurer), Cindy Pecile (Membership), ~~Carla Marasco~~ (Secretary), ~~Ignacio De La Torre~~ (Past President)

General Topics

- Board members will continue to Review and Accept the Financials & Meeting Minutes prior to them being published in the wire.
- A motion was made and approved to push discussion of how to move forward with Operating Reserves until the next Board Meeting when additional board members are present. Adjustments may be made for next year's presentations line-up.
- Bus trip cost will remain at \$40 per person instead of going to the newly approved \$45 increased rate. This will be discussed again when financials are being figured out.
- Personal emails will no longer be in the wire to prevent spam & hacking. All wishing to contact SDBC will be directed to go through the website. Susan will forward any emails that need to be disbursed to Board members not on the general email chain.

Board reports

Jaya Kaelberer (Treasurer)

- Currently looking for a replacement for the Treasurer for 2025
- Looking to add a questionnaire for data collection as part of new membership and renewals processing
- A motion was made and approved to purchase three CDs, one CD for the SDBC main account not to exceed \$20K; one CD for the Larry Ragel scholarship account not to exceed \$15K; and one CD for the Pavilion account not to exceed \$10K

Matt Jillson (First VP)

- Aug - Lindsay Shiba will do a presentation on bonsai show displays. (BYOT session)
- Sept – Mark Edgar to do a Beginner focused presentation
- Oct – Special Event / Picnic
- Nov – Mathew Presenting
- Dec – Holiday Program

Phaedra Ehring (Special Projects)

- Sign-ups are being taken for Nisei week bus trip to Little Tokyo in LA

Ignacio De La Torre N/A

Bill Graham (Education)

- The Mas Takanashi Grant updates are being sent to Sandi Marasco to be typed up and ready for the next meeting.
- New teaching manual is almost finished and should be ready for the next Beginner class session
- Aug - John Jackson will do a Narrow Leaf Ficus workshop (Sold Out)
- Sept - John Voss will do a workshop
- Oct – Special Event w/Bjorn & Yannick (BYOT Workshops)
- Nov - Jason Saito will do a Saikei Workshop (Soil/Rock/Tree Plantings).
- Dec – Annual Holiday Event (Tent. Long Term Workshop with John Voss – 3yr commitment)
- Jan - Repotting
- The 2024 Bonsai planning of the event with Bjorn & Yannick is moving along. Schedule Rundown: Yannick Demo/Bjorn Presentation 8:30am-11:30am; Business Meeting & Silent Auction 11:30am-1:30pm in Rm 101; Bjorn Demo/Yannick Presentation 1:30pm-4:30pm. The planning committee will continue to work on the details of the event. Some vendors are already set, more are being worked on; Picnic will be done as always, Matt will be doing the main dish, Members will bring sides and desserts; Member are asked to bring donation items for the silent auction fundraiser. This will be a credit card only event (committee: Bill Graham, Bob Hale, Brenda Crann & Elaine Kenniston)

Carla Marasco (Secretary)

- Carla will speak with Brian about recording presentations of the October event and will have them edited and uploaded to YouTube

Cindy Pecile (Membership)

- There are currently 536 members.
- Approximately 86+ people were in attendance of the club meeting.

End of Meeting 8:00pm

San Diego Bonsai Club Board

President:	Susan Ronan
1st Vice President	Matt Jillson
Secretary:	Carla Marasco
Treasurer:	Jaya Kaelberer

VP Special Projects:	Phaedra Ehring
VP Education:	Bill Graham
VP Membership:	Cindy Pecile
Past President:	Ignacio De La Torre

Appointed Positions

Refreshment Coordinator:	Adrian & Tony Mangina
Publicity:	Keith Carter
Sunshine Chair:	Susan Baker
Librarian & Historian:	Sonya Holmquist
Help Corner	John Voss
Tool Sales Manager:	Brenda Myers Jake Shaver

The Bonsai Wire Editors:	Sally Dischinger Steve Dischinger
You Tube:	Carla Marasco
Audio Visual:	Bryan Schroeder Wayne Lord
Webmaster:	Ron Kaelberer

Japanese Friendship Garden

Bonsai Curator:	Neil Auwarter
Liaison :	Barbara French-Lee

Safari Park Bonsai Pavilion

Curator:	John Jackson
Assistant Curator:	Dennis Wagner
Liaison :	Mark Edgar

Visit our website to find contact information

Please note: *The Bonsai Wire (TBW) is published 12 months of the year, by the San Diego Bonsai Club (SDBC). TBW and the SDBC logo are properties of SDBC. Articles are provided by SDBC members. Any articles submitted by non-SDBC members—if published—become property of SDBC. All submitted articles are subject to editing. No part of this publication may be reproduced without written permission from the SDBC.*

SDBC Upcoming Meetings: DATES AND TIMES ARE SUBJECT TO CHANGE

Month	Date(s)	Location	Rooms
August meeting	Aug. 11	Casa del Prado	101 and 104
September meeting	Sept. 15*	Casa del Prado	101 and 104
October meeting (Bonsai Fest)	Oct. 20*	Casa del Prado	101 and 104
November meeting	Nov. 10	Casa del Prado	101 and 104
December meeting	Dec. 15*	Casa del Prado	101 and 104

Additional Upcoming SDBC Activities

Nisei Week bus trip	Aug. 17	Little Tokyo, Los Angeles	–
2024 Fall Show	Sept. 28-29	Casa del Prado	101

*Note: The SDBC meetings are subject to availability of the rooms in Casa Del Prado. Our preferred date for the second Sunday of each month sometimes conflicts with other clubs show or special event, so we choose an alternative day.

Japanese Friendship Garden bonsai workdays: Wednesdays; contact Neil Auwarter for volunteer information.

San Diego Zoo Safari Park Bonsai Pavilion workdays: 1st and 3rd Saturdays of the month; contact Mark Edgar for volunteer information.

*August
2024
The Bonsai Wire*



Return Service Requested

San Diego Bonsai Club
P.O. Box 86037
San Diego 92138