



The Bonsai Wire

January 2011

The monthly newsletter of the San Diego Bonsai Club, San Diego, CA.

Message From the President

Happy New Year to everyone! I hope everyone had a wonderful time during the holiday season.

I truly appreciate all of the hard work and countless hours that **Steve Valentine** has spent during the past two years as our club president. In addition, he has also done a wonderful job as curator of our Bonsai Pavilion. I also want to thank the SDBC board for doing an excellent job, running the club in a successful manner.

I always stated that the SDBC is one the best club in the nation. Our focus is based strongly on bonsai education and beside GSBF, this is the only club that is intimately associated with two bonsai collections; the Bonsai Pavilion at WAP and the Japanese Friendship Garden.

Our volunteers spend countless hours on a daily basis to open our new Pavilion by May First of this year. We have a short time left and a long way to go. So, in order to reach our goal for the May first grand opening, we need lots of help in both volunteers and money. Our success will make it possible for us to celebrate our grand opening. Please get involved, donate your time and money as much as you can. In addition, our club is a 501(c)(3)

educational organization, so your contributions are Tax deductible.

Our fine board members and directors are working hard to run the club as smooth as possible. Our club offers a large set of activities such as beginner class, intermediate class, special programs, demos, workshops, bus trips, newsletter, accounting, refreshment, tool sales, raffle, picnic, and many more. Your active participation and your input at all levels, even if it is a very little bit, is going to help us to have a strong and a very successful club.

There is always room for improvement. I am asking the membership to please let us know the area of your concern and your input to have a better and stronger San Diego Bonsai Club. I am looking forward to seeing that everyone in our membership gets involved in all of our club's activities.



Abe Far

Programs

Before

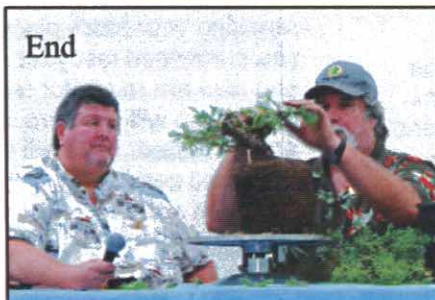


During

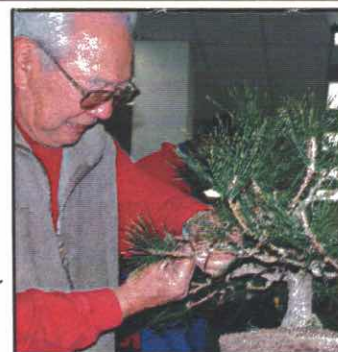


Steve Valentine was our main demonstrator for December. He worked on a juniper and by his side was **Dave Rochester**. Dave fielded questions from the audience as Steve went through the process of determining the front, identifying key branches, removing clutter, and also keeping an eye on the nebari. Thanks Steve and Dave, for the educational demonstration.

End



Fred Miyahara will be the January 2011 demonstrator. He has been a member of our club for many years and his area of expertise is in grafting and Japanese black pine. Fred has grafted many shimpaku and hundreds of black pine, which he



Fred Miyahara

started from seed. He has learned from American and Japanese masters such as Mas Ishii, Ernie Kuo, Dennis Makishima, Bill Castellon, Kathy Shaner, Boon Manakitivipart, and Kenji Miyata. He has also studied books and many articles, and most importantly has learned through experimentation.

Fred has served as SDBC president and he is currently VP and Curator of the Japanese Friendship Garden in Balboa Park. In addition, he is a professional black pine pruner.

Thank you Fred for accepting our invitation to our January meeting as our main demonstrator.

Inside this issue

President's Message	p1	December Mtg Minutes	p4	Black Pine Notes	p6
Programs	p1	Haiku-Marty Mann	p4	Membership Update	p7
SDBC Pavilions at the Safari Park	p2	San Diego Bonsai Ideas #109	p5	GSBF Bonsai-a-Thon	p7
Education Report	p2	Christmas Tree Contest	p5	Refreshments and Benefit Drawing	p7
Club Meeting Pics	p3	Special Events	p5	SDBC Pavilion Donor Board	p7
Club Officer Information	p3			Calendar of Events, Mtg Agenda	p8

San Diego Bonsai Club Pavilions at the Safari Park

Our December activities as well as the entire year of 2010 have been most significant for the SDBC Pavilions at the Safari Park. The late rains curtailed some progress but much success shows in the construction area of the new Pavilion. Our bonsai have responded well to the special care our volunteers give them and we have had some new acquisitions for the collection also. Fertilizing, trimming, and transplanting are truly ongoing activities

The special presents to the SDBC Pavilions have been the many volunteer hours our members have donated to both Pavilions. December's non-paid, hard-working helpers included: a new volunteer, **Bob Knox**, along with **Neil Auwarter, Alan Burrows, David & Martha Choy, Cathy & Mark Edgar, John Jackson, Jim Kirchner, Ray Lish, Steven Miceli, Pat O'Brien, Sally Prestele, Jon & Terri Petrescu, 'lyn Stevenson, Cary & Steve Valentine, Dennis Wagner, and Dave Woodall**. Thank you once again! Certainly, the delicious snacks which show up at each work session are special for their sustenance and the excuse always to take a break and visit with each other. Thanks all!

Several meetings have been held with various members of the Park staff and our consulting experts regarding the landscaping, the hardscape, and the installation of the water and electric lines. Special thanks and appreciation to **Dennis Wagner** who supervised, installed, and connected all the electrical conduits, etc. within the new Pavilion areas. We are now wired for future lights, power tools, microphones, etc. His generous talent, time, and donated materials have been most significant!

Curator Steve & Cary Valentine along with **Jim Kirchner** negotiated the purchase of the fencing materials. **Ray Lish** and **'lyn** joined them for the delivery and unloading at the construction site and a large tarp safely covered all material before the heavy rains arrived! Over 60 feet of fencing was installed before Christmas. It's looking very good!

Guillermo Castano has designed and prepared drawings and the materials list for the beautiful Takanashi entrance gate which also incorporates the SDBC logo. Guillermo is donating his architectural talents to this project and we do thank and appreciate him.

John Jackson's bridges have weathered the rains beautifully and the cement "patchwork" in the river dams are functioning perfectly. All that will be enhanced when we finally put in plantings.

Finally and most importantly:

Please, everyone, plan to stay after the January 9th SDBC meeting at Balboa Park for a short, important session. We will discuss the Bonsai Pavilion Project, its progress, its current financial situation, and the plans for the May 1st, 2011 Opening at the Safari Park. We need input and participation from SDBC members even if you have not been volunteering at the Pavilions recently. This is a total Club commitment that needs cooperation from all of us. Thank you in advance!

'lyn Stevenson,
SDBC-Safari Park Liaison,
New Project Manager

SDBC Education for January - Happy New Year!

Beginner Class

We have a full "learning bonsai basics" class ready to start the New Year.

Starting this month (Jan), Dave Rochester will be teaching our beginning skills class. Dave is one of the SDBC teachers and has a vast knowledge of bonsai and growing bonsai stock. He has completed our Mas Takanashi grant as well as the GSBF teacher's grant. Come early and get your sticker to show that you have paid and are in this class. You can get your sticker from Cary in room 101, then come to the Library in room 104 at 9am sharp. We will supply you with all you need. Bring a pad of paper and pencil for note taking. Subsequent classes will be held in February and March. We will start class #2 for 2011 in April. Always sign up early with Cary as our classes fill up fast and you do not want to be left out. It is exciting to see so many folks who want to learn bonsai or add to their bonsai knowledge.

Intermediate Class

Happy New Year! We will start the year off with repotting your black pines. Bring in the black pines that you purchased last year. They have had a year to rest and now are ready for repotting. Fred Miyahara and the pine group will be there to help you all. For those that are interested, Fred will have available for 10 members, a pot and soil for you at a cost of \$15.00 or you can use your own pot and soil. Please see Cary for payment of class supplies.

Observers are permitted for this session. This class is for everyone to enjoy not just a "hands on" activity. You can learn lots from just watching and listening.



Steve Valentine,
Vice President Education

Club Meetings Pics

Pictures by Mario Condit

Below is the new board member: Left to right are Barbara French-lee, Maria Barbosa, Cary Valentine, Jim Rendina, Joyce Goldman, Abe Far and Steven Valentine.

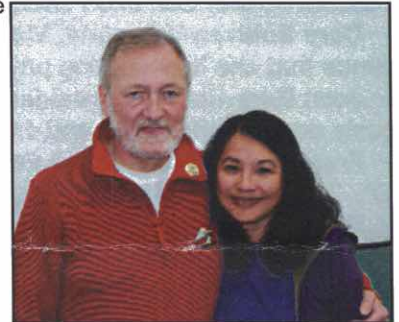


Below are the 2010 board members: Left to right are Dave Rochester, Tom Angelwicz, John Voss, Maria Barbosa, Joanie Berwkitz, Jason Tucker, Jim Rendina, Cary Valentine, Cindy Read, Joyce Goldman, Abe Far and Mario Condit.



Pictured above left to right are Bob Woodall, Joyce Goldman, and Larry Upp. They had missed the volunteer appreciation ceremonies at the Safari Park, so their lei's, grass skirts, and straw hats were presented to them here at our December meeting.

Below and right are Tom Anglewicz and Florentina Cruz. They have been the tools sales managers for this past year. They have done an awesome job in stocking up with supplies and offering a large variety of tools, soils, wire, turnstyles, sealers, screens and many other bonsai related supplies. Thanks for all of the hard work this past year.



The Bonsai Wire is a monthly publication of the San Diego Bonsai Club. All articles are provided by SDBC members. All articles must be received no later than 10 days after the club meeting by the The Bonsai Wire Editor, **Mario Condit** (mario.condit@sbcglobal.net). **Shirley Kavanaugh Jr.** is responsible for folding, labeling, and mailing. If you have any questions about article placement or special requests, please call the editor (see below for contact information) and leave a message. I will try to respond to you as soon as possible.

The Bonsai Wire

Is a published monthly by the San Diego Bonsai Club, Inc. a non-profit, educational organization 501 (c) (3).

San Diego Bonsai Club Board Members

President: Abe Far (619) 234-3434
abefar@cox.net

1st Vice President: Jim Rendina
JamesRendina@cox.net
(619) 743-6664

- VP for Membership: Cary Valentine
(760) 445-2548
caryme2@yahoo.com
- VP for Education: Steve Valentine
(760) 445-2548
caryme2@yahoo.com
- VP for Special Projects:
Barbara French-Lee
(619) 557-0556
barbflee@hotmail.com
- Treasurer: Maria Barbosa
(619) 606-6523
bonsaigarden@earthlink.net

- Corporate Secretary:
Joyce Goldman
(760) 736-4735
jgoldmankfx@yahoo.com
- Past President: Steve Valentine
caryme2@yahoo.com
- Japanese Friendship Garden,
Bonsai Curator: Fred Miyahara
(619) 286-8602
tmiya@cox.net
- Safari Park Bonsai Pavilion:
Curator: Steve Valentine
(760) 445-2548
Liaison & Manager: 'lyn Stevenson
(858) 486-4805
- Web Master: Kevin Grey
Webmaster@sandiegobonsaiclub.com

- Historian: Cary Valentine
- Public Relations: Sara Kersbergen
h:(619) 245-5995
c: 619-245-5995
- Librarian: Tyler Doren & David Choy
- Tool Sales Managers:
David English & Rich Glauser
- Benefit Drawing Mgr: Jason Tucker
- Refreshment Coordinator:
Nellie Downie, (858) 581-9151
- The Bonsai Wire Editor:
Mario Condit
(619) 463-1648
mario.condit@sbcglobal.net
- Spring Show Chair-2011: tbd
Co-Chair: tbd
Plant Sales: tbd
Reception: tbd

This newsletter printed by **The UPS Store (www.upsprint.com)**.
4809 Clairemont Dr., San Diego, CA 92117, Ph: (858) 490-1690 Fax: (858) 490-1695



San Diego Bonsai Club

Minutes of the Regular Meeting of the Members

December 11th, 2010



1. **Call to Order:** The meeting of members of San Diego Bonsai Club was called to order at 10:30 a.m. by Steve Valentine, President. A quorum was present.
2. **Approval of Minutes:** The minutes for the November 12, 2010 meeting were approved.

3. Reports

➤ **Steve Valentine, President,** 1) Reported on the SDBC tree for the Park's December Nights, thanking Pat Singer and the rest of the team for their help. 2) Announced the Club's annual license has been renewed. 3) The 2011 SD County Fair theme is Race to the Fair. Officers for 2010 were recognized for their service, each receiving a commemorative gold pin. 4) Thanked Joan Holliday for coordinating the Christmas Party, including a switch of venue just days before the event. 5) Recently nominated for the GSBF Plant a Seed program, Tim Kirkish was presented with a GSBF's check in the amount of \$100 and a 2010 GSBF Convention pin. 6) Announced the following new position volunteers: Librarian – Tyler Doren and David Choy; Tool Sales – David English & Rich Glauser .

➤ **Maria Barbosa, Treasurer:** The Club received several generous donations to the Pavilion Project, including those from Jon & Terri Petrescu and David and Dawn English. 2) Bank balances: Club: \$15,185.09, including a 7-month \$5,000 CD, and Pavilion: \$28,890.88.

➤ **Cary Sullivan-Valentine, Vice President Membership:** 1) Introduced new member; 2) Reminded all in attendance that she is accepting payment of 2011 dues.

➤ **Joan Berkwitz, Vice President Education:** 1) Thanked Dave Rochester, John Voss, and the others who generously donated their time and experience to the Beginner classes in 2011.

➤ **Fred Miyahara, Japanese Friendship Garden:** 1) The last youth class for 2010 will be held on Friday, December 17. 2) In February and March, the Garden will be offering a beginner class.

➤ **Steve Valentine, Safari Park, Bonsai Pavilion Curator:** 1) Work will start on fence installation the week of December 18, as delivery of the material is expected before the end of that week. Many hands will be needed, including carpenters with appropriate tools. More information and a work schedule will be provided by email.

➤ **Barbara French-Lee, Special Projects:** 1) December 26-31, 2010 – Aiseki Kai Exhibition @ Huntington Gardens; January 15, 2011 - Bus Trip to Winter Silhouettes @ Los Angeles Arboretum; February 26, 2011 – Bus Trip to Bonsai-a-thon @ Huntington Gardens with a stop at Jim Barrett's.

➤ **Jason Tucker, Raffle Sales:** 1) There will be two special raffles following the meeting: for the day's demonstration tree, and stones and a descriptive book – both from China.

➤ **New Business:** 1) The 2011 slate of officers were sworn in:

President	Abe Far
1 st Vice President	Jim Rendina
Vice President, Membership	Cary Sullivan-Valentine
Vice President, Education	Steve Valentine, Past President
Vice President, Special Projects	Barbara French-Lee
Secretary	Joyce Goldman
Treasurer	Maria Barbosa

➤ **Abe Far, Vice President,** 1) Thanked Steve Valentine for his service to the Club as President for the past two years, presenting him with a commemorative certificate and a token of the Club's appreciation. 2) Announced that in January Fred Miyahara will both chair the Intermediate Class and provide the demonstration program. Subject: Black Pines. To complete the 2011 demonstration calendar, Dave Rochester will speak in November.

Adjournment: There being no further business, the meeting was adjourned at 10:45 a.m.

Respectfully Submitted,

Joyce Goldman, Corporate Secretary

*Inner pleasures rise
With the laughter of children
Grand mothers, grand fathers beam*

Marty Mann January 2011

Now that you had put most of your trees to bed for a winter rest it would appear that all you have to do is wait for spring to come. In the world of bonsai "this is just not so".....**no IDLE TIME.**

January is the "beginning-of-the-year" month. Bonsai people start with an eager outlook for a new spring season by getting ready in advance and understanding what can and should be done at this time.

Remember that the soil mixes in your potted trees have been somewhat inactive due to the cooler weather of the past few months. The soil bacteria, in its dormant state, has not been providing any nitrogen to these growing plants while they rested. Now is the time to plan ahead for your supplies of fertilizers. You will be resuming your feeding schedules in late February. This is the time to do your clean up chores. Remove all the winter trash around your work area as well as on your potted trees and growing stock. This is the best way to prevent infestation of insects and fungus diseases. Don't throw any of this late winter trash into your compost heaps since it may be infectious. It's safer to throw it away.

Now is the best season to study plant designs. Spend some serious time with each of your trees by a careful review of the branch structures, the trunk lines and their placement and relationship. In the case of your deciduous trees, you can see them clearly without the disguise of a blanket of leaves that hides their faults and problem areas. Remember the basic bonsai design principals of crossing branches, bars, angles, elevations, relationships to the trunk movement and the important points that may distinguish your tree's quality from just any other bonsai. Your study may disclose the need to re-wire and reposition various branches. Do so with great care since the dormant season was a time of brittle branches on most varieties of trees.

It is still too early to concern yourself about the feeding programs each tree will soon require however now is the best time to improve the soil condition. The addition of lime will normalize the acidity of the soil. The additions of gypsum will loosen hard clay soils. Decomposed granite or coarse sand will add to the porosity and improve the potassium qualities in poor soil. Adding organic matter to your mix will stimulate the soil microorganisms. Putting trace elements and minerals into the soil along with major nutrients such as cottonseed meal or bone meal will provide a proper base of a food source next month for continued plant health. Build your repotting mixtures based upon the type of material you have to work with and the type of trees you will be repotting. Plan ahead.

During this **idle time** in January you can occupy yourself with a program of pot cleanup. All those pots which have been sitting around and waiting for your repotting activities to begin, have probably accumulated layers of soil and lime deposits. Scrub them with a strong soapy solution and some bleach. Apply a lime-off cleaner or vinegar to the white spots (or just some elbow grease and cleanser) and rinse them well. Allow them to dry in the full sun to prevent any infestation carryover.

This article has been extracted from the recently published book called "Bonsai Ideas"© by Marty Mann. Material is not to be copied without publisher or author's permission. January 2011

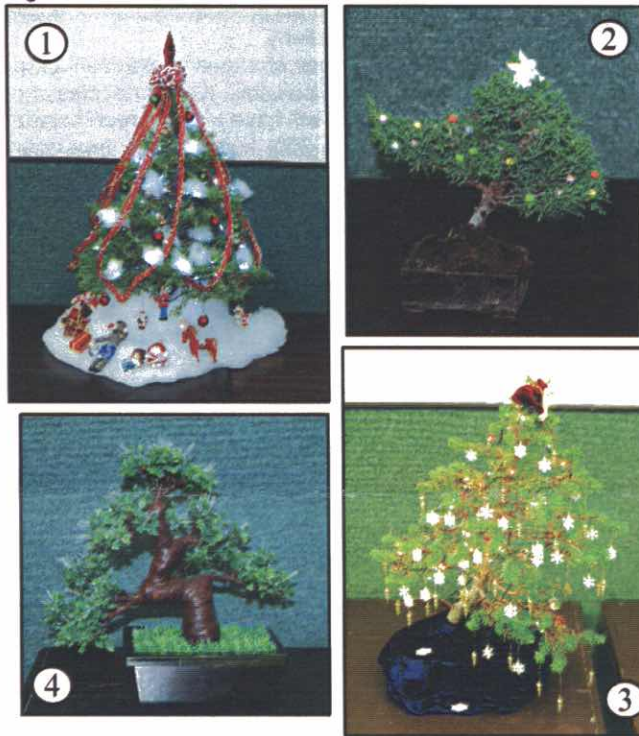
Bonsai Christmas Tree Contest

This years contestants were Shirley Kavanaugh and Joanie Berkwitz. Below are pictures of the contestant's submittals. For their participation, both Shirley and Joanie received \$25 gift certificates, donated by the SDBC, for the tool table.

Shirely submitted three trees and Joanie one tree. Shirley's trees are labeled 1,2,3 below. These were live trees. No tree stood taller than 18 inches, and the ornaments as well as the flocking and garland were expertly applied.

Joanie's tree was a faux bonsai, and had optical lighting which changed colors every few seconds. If you can't keep a tree alive, this could be an option for you.

Overall, they trees were lots of fun to look at and also to marvel at the detail. Thanks to Shirley and Joanie for bringing these in to the meeting.



Special Events

We hope you can join us for two great trips in January and February. On January 15th, 2011, we will be going to the LA Arboretum for the Winter Silhouettes. This is a great show where we can enjoy the deciduous trees without their leaves and appreciate the interesting branching designs. This is always a fun event and includes the Bonsai Show, entertainment, a great buffet provided by the hosting club, and a raffle of bonsai trees and pots. The San Diego Club supplies the dessert so please bring a dessert and an item for the raffle. In addition, we will stop at Bruce and Yaeko Hisayasu's for bonsai and pots and Jim and Helen Barrett's for bonsai and pots.

The bus will leave from Balboa Park. It will be in the parking lot off of Presidents' Way and Park Blvd. It will depart at 11:00 am SHARP and will stop at Carlsbad Village Dr. behind the Shell service station at 11:30 am. We will leave the Arboretum at 9pm and arrive back in San Diego around 11pm. We will have a fun filled day.

On February 26th we will be going to the Bonsai-a-thon held at the Huntington Gardens in LA. There is a Bonsai Show, bonsai demonstrations, a tour of the gardens, an auction and raffle. If we can arrive on time, they are serving breakfast. We can also purchase lunch for around \$5.00.

The bus leaves Balboa Park at 7:00 am SHARP and arrives at Carlsbad Village Dr. at 7:30am. We will go straight to Huntington Gardens. We leave the gardens around 5:00pm.

Barbara French-Lee,
VP of Special Projects

In nature: Grows fast to 100 feet in cooler, moister climates; in San Diego, grows slowly to 20-25 feet. 2 needles in each fascicle (white pines have 5; Monterey pines have 3) with substantial differences in needle length and bark pattern from tree to tree. Grows best in full sun, often on nutrient-poor rocky or sandy soil where drainage is excellent. Drought tolerant.

As bonsai: A good black pine is a 15-year project but can be enjoyed continuously during the process. Smooth barked in earlier years, they develop their characteristic bark pattern after 10-15 years. They range in size from shohin (very difficult because of needle length) to large 4-man bonsai. Grown in various styles, but usually in the informal upright style with branches on the outside curves and relatively flat foliage pads; so much so that this style is often referred to as the "pine" style. Excellent for literati style as branches can be thinned out and wired down in a stylized cranes-foot shape.

Growth: Pines grow far more foliage than they need to survive, so they can be thinned out substantially to allow sun to reach all portions of the tree. Sun is necessary to stimulate new bud growth; branches more than 5 years old often do not sprout new growth because the bark is too thick for the sun to penetrate and stimulate buds. They are strong top growers. Consequently, the top branches can be thinned heavily but more buds should be left on side branches. Cutting off the top, where the major growth occurs, is very hard on the tree and will slow overall development. Since pines heal well (even large cuts will eventually heal over and bark up), growers often leave the top on the tree and leave large, low sacrifice branches until the tree has much of its final shape. Then they are removed, with very small jins left, as the wood is not so hard as juniper wood and will rot. Alternatively, if the tree is in the ground the top can be cut back regularly

to up-growing side branches to create changes in direction; properly made cuts will heal over completely.

Sun: Full sun, and some wind if possible. Keeps needles shorter and tree healthier. Will grow in partial shade, but will be leggier with softer foliage. A healthy black pine will have strong green color and stiff, sharp needles; soft needles indicate unhealthy conditions.

Soil: 75%-80% inorganic; 20%-25% humus. Very free draining, but generally no particles over 1/4" in diameter. Decomposed granite rather than pumice and #12 silica sand for the inorganic portion; pine bark itself may be used for much of the organic material.

Water: Water sparingly; keep pines on the dry side. Over-watering results in poor appearance and a large number of yellowing needles on older growth and may lead to root rot in heavy soils. It also results in longer needles; very experienced growers keep needle size down by being very sparing with water.

Fertilizing: Light but regular fertilizing as heavy fertilizing leads to rapid, rangy growth. Low nitrogen; cottonseed meal in cakes that do not break down and mix into the soil or imported Japanese fertilizers are good. Foliar feed for trace minerals. Since pines are evergreen, they do not store as much carbohydrates during the winter as deciduous trees do. Therefore, fertilizing can begin earlier in the season for pines than for deciduous trees, as they begin their growth needing a fresh supply of nutrients.

Pruning: In San Diego, major pruning is done twice, in late June or early July and in November. Select and prune for branch structure either time. There are many theories of candle-pruning, depending on the age of the tree and the growth pattern desired, and the advanced grower should read about them elsewhere. Generally in San Diego, the candles are removed completely around the 4th of July to cause a second set of buds to grow and then top buds and bottom buds on each branch are removed in November and the tree is wired. Down-hanging needles can generally be removed completely; leave needles on the sides and top as new buds form at the base of the needles. Removing all needles generally kills a branch and this technique can be used slowly to prepare a tree for removal of a branch.

3-year old needles can be removed in late winter/early spring, as soon as the tree shows signs of new growth. Hold the fascicle of the old needle in one hand and pull the needle away from the tree with the other hand. The object of this treatment is to leave the fascicle in place and not disturb the bud at the base of the fascicle, yet let enough sunlight into stimulate growth of the bud.

Multiple branches coming out from the same spot on the trunk should be reduced to 1 or 2 branches very quickly and then ultimately to 1 branch. Pines store carbohydrates at the branch collar (the connection between the trunk and the branch) and multiple branches will soon store enough carbohydrates to create a large knot which cannot be corrected.

Wiring: Copper wire, as pine bark is fairly tough. Pine bark can be marked by wires, especially young, fast-growing shoots, so the wiring should be monitored and wire removed before it cuts in. Once marked, the tree takes many years to grow over the marks and the marked branch or trunk may swell out of proportion to other branches. Wire every branch, using 6-gauge to 20 or 22 gauge wire. Branches are quite flexible and can be bent strongly to place branches where they need to be. Use tightly wrapped raffia for the most severe bends. Clean old branch stubs and knots off before wiring so the wire will lie close and be more effective. Do not catch needles under the wire; thin out needles before wiring and pass the wire between needles. The very ends of branch tips should be wired with a slight upward curve as the tree looks better and will grow healthier this way.

Transplanting: February and March in San Diego; no later than the end of March. Trees can (and should be) safely bare-rooted to remove all old soil, especially ground soil in which the tree was grown. Add a small amount of bone meal, but no other fertilizer should be added to the soil mix, as pines are light feeders and the excess fertilizer may lead to root rot. Use clay pots for growing pots as they are porous and help drainage; use a medium-to-deep bonsai pot as pine roots like the extra depth. Examine roots carefully; in March, new fat roots with longish white tips should be evident; fine black roots indicate a problem and soft black roots indicate rot. Cut all bad roots off, even if this means a severe trimming. Pines regrow roots readily if soil and water conditions are good, so don't be tempted to keep a bad root.

Propagation: From seed, although very large, healthy candles can be air-layered. Generally black pine bonsai are not allowed to grow large candles so the technique is seldom seen in San Diego.

Pests and diseases: Tip moth (European pine shoot moth); borers; adelgids; root rot in wet soils. Tip moths result in dead new shoots; they will be brown while the rest of the tree is green; when removed and split open, the shoot will show a hollow center where the larvae has eaten the inside. Systemic pesticides sprayed in spring and fall control tip moth and borers. Repeated sprayings with Safer soap, Malathion, or Diazenon will eliminate adelgids which are evidenced by a white, cottony/moldy appearance at the base of the leaves. Do not confuse the white sheath at the base of the needles with adelgid. Repot and cut off all black and dead roots if root rot is detected.

Membership Update!

Happy new year and happy bonsai growing. Please welcome our newest club member!

Cade Johnson

He received his membership and beginning class as a Christmas gift. How nice for him.

This is a gentle reminder that "dues are due" and will be considered delinquent on April 1st. Membership cost is \$25.00 for a single person and \$35.00 for a family membership. Check the shoe box and get your envelope and verify your information (email, phone, address), and make changes as needed (redline).

If you like, you can always mail in your payment to
SDBC
PO Box 40037
San Diego, CA. 92164

Please stop by the membership table to check for any new bonsai information. We always receive flyers for other events as well as sign up lists for any upcoming events or shows. Oh, and don't forget to sign in!

Membership VP, Cary Valentine

GSBF Bonsai-a-Thon XV

Just a reminder that the event will be held at the Huntington Library and Botanical Gardens, 1151 Oxford Road, San Marino California. Hours will be from 7:30 am - 4:30 pm, Saturday, February 26th and Sunday, February 27th.

Admission is free for all GSBF club members. The invitation is extended to bonsai novices, enthusiasts and experts, on behalf of the Golden State Bonsai Federation Collection at the Huntington. This is our annual fundraising event.

More information on features and headliners in next month's newsletter.

www.sandiegobonsaiclub.com

Bonsai Pavilion Donor Board

End of the year donations to the Bonsai Pavilion Honor Board were most encouraging.

We welcome all these donors and encourage other members to join in 2011. Many thanks to the following December donors.

The Aldo Pia Memorial Fund is now over \$1000 with new contributions being given by **Casa de Amigos Home Owners Association, Denise Cerro, Teresa Heath, Marty Mann, Kathy Martineau, Sally Prestele, John & Suzanne Pusey, Michael Saccucci, Carl & Leona Stringfield, and David Woodall.**

An **Anonymous** Elm donation was received for \$100. **Jon & Terri Petrescu** increased their Maple donation another \$500 and **Dawn & David English** increased their donation \$300 to the Juniper list. **Barbara French-Lee** increased her previous donation another \$200.

Much infrastructure was done in 2010 in the Pavilion and we continue to plan for the Opening Day on May 1, 2011. We hope all our donors and potential donors will attend and participate in a Planning and Update Meeting after our January 9, 2011 SDBC Meeting at The Prado in Balboa Park.

Refreshments

Many thanks to the folks that brought in refreshments to the December meeting. December's refreshment team is listed below:

Nellie Downie, Shirley J. Kavanaugh, Tom Anglewicz, Maria Barbosa, Ray Lish, Tricia Bonapace, Terri Petrescu, Abe and Cristina Far, Cary Valentine, Harlan and Mary Ann Price, Joyce Goldman, Joan Holliday, Barbara French-Lee, Martha Choy, Maude Laracy.

Nellie Downie,
Refreshments Coordinator

Benefit Drawing

Many thanks to the folks that brought in items for the raffle table to the December meeting. A new year is at hand and it's time to make resolutions. If yours is to get rid of the old, this is a perfect way to "move it" into someone else's hands. And it's not just for old stuff. If it is new and you don't use it, consider donating it. This month's donors were:

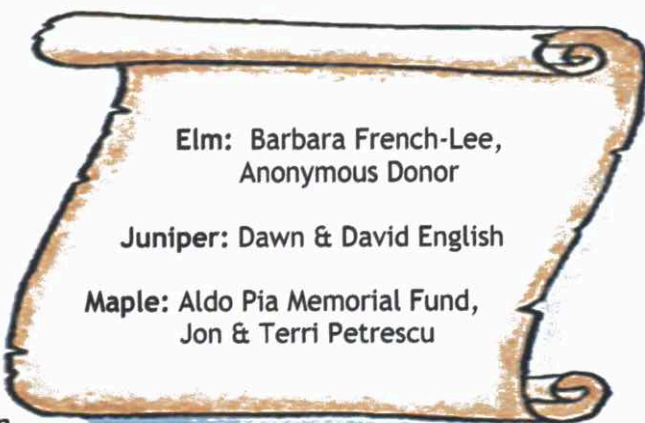
Dave Woodall, Terri & Jon Petrescu, SDBC, Cary & Steve Valentine, Abe & Cristina Far, Florentina Cruz & Tom Angelwicz, John Jackson, Jim Rendina, Timothy Kirkish, Shirley Kavanaugh, Marty Mann.

Jason Tucker,
Benefit Drawing Coordinator

Special Events

We hope you can join us for two great trips in January and February, on January 15th, 2011. The bus will leave from Balboa Park. It will be in the parking lot off of Presidents' Way and Park Blvd. It will depart at 11:00 am SHARP and will stop at Carlsbad Village Dr. behind the Shell service station at 11:30 am. We will leave the Arboretum at 9pm and arrive back in San Diego around 11pm.

Barbara French-Lee,
VP Special Events

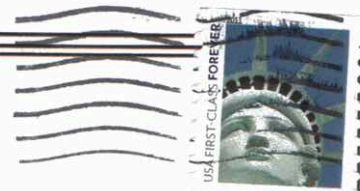
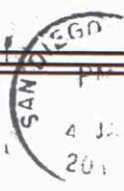


Donation Categories

Black Pine: \$10,000 and upwards
Oak: \$5,000 to \$9,999
Maple: \$1,000 to \$4,999
Juniper: \$500 to \$999
Elm: \$100 to \$499
Azalea: \$10 to \$99

'lyn Stevenson, New Pavilion, Project Manager

San Diego Bonsai Club, Inc.
PO Box 40037
San Diego, CA 92164



ADDRESS CORRECTION REQUESTED

San Diego Bonsai Club Calendar of Events

- January 9th Sunday
Regular SDBC Meeting (Featured Guest: **Fred Miyahara**)
- January 15th Saturday
Winter Silhouette-Los Angeles County Arboretum
- January 22nd Saturday
SDBC Workday at the Wild Animal Park , 9am to 12pm
- January 28th Friday
Japanese Friendship Garden, Kids Class 10:30 to noon
- February 13th Sunday
Regular SDBC Meeting (Featured Guest: **Michael Sykes**)
- February 19th Saturday
SDBC Workday at the Wild Animal Park , 9am to 12pm
- February 25th Friday
Japanese Friendship Garden, Kids Class 10:30 to noon
- March 13th Sunday
Regular SDBC Meeting (Featured Guest: **Harry Hirao**)
- March 19th Saturday
SDBC Workday at the Wild Animal Park , 9am to 12pm
- March 25th Friday
Japanese Friendship Garden, Kids Class 10:30 to noon
- April 10th Sunday
Regular SDBC Meeting (Featured Guest: **Jim Barrett**)
- April 16th Saturday
SDBC Workday at the Wild Animal Park , 9am to 12pm
- April 22nd Friday
Japanese Friendship Garden, Kids Class 10:30 to noon

Sunday, January 9th 2010
Balboa Park, Room 101
Casa Del Prado

Meeting Agenda

9:00 am	Beginner's Class	Room 104
9:15 am	Library Opens	Room 104
	Intermediate Class	Room 101
10:30 am	Business Mtg	Room 101
11:00 am	Fred Miyahara Bonsai Demo	Room 101
12:00 pm	Lunch	