

The Bonsai Wire

July 2010

Message From the President

Roy Nagatoshi always provides a great demonstration and we learn a lot from him as well. If you were lucky enough to go on the great bus trip that **Maria Barbosa** planned for us, you know that we had a great time at Roy's nurseries. And boy, did we shop. Thanks to **Michael Jonas** for inviting us to a private sale at **Dick Beltran's** house. He was a member of Sansui Kai for 30 years. We were very lucky to have planned a trip and have this special sale also.

The refreshment table at our last meeting was a little bare. **Nellie** does such a great job but can use some help. PLEASE bring a snack or dish to share at the next meeting. Everyone enjoys a light snack and the greater the variety the better for all. We are a big club and if everyone helps out with this and the raffle table, it would be a great help. Thank you all so much. I know we ask a lot of our members, but it all goes back to all of you.

I would also like to thank **Shirley Kavanaugh** and **Jim Rendina** for conducting demonstrations on Bonsai day July 4th. In addition, many thanks to **Cristina and Abe Far**, **Joanie Berkwitz**, and **Linda Haque** for being at the fair representing the SDBC. Keep the fair in mind for next year, even if you are a novice. You might win the *SDCB Bill Murphy novice award* that our club sponsors. It is 100.00.

Cary and I were asked to have a display at the Ultrastar in Carlsbad for the opening of The Karate Kid movie and were there to hand out SDBC information.

I want to thank **John Voss** for once again donating half of the price of the junipers from his August workshop to the SDBC-WAP new pavilion. This is a win-win workshop for all. Please sign up at the membership table at the entry way.

The junipers in this workshop are about 30

years old and are great stock with a lot of potential. There are 20 spots remaining, they will go fast, the cost is \$100.00. I want to thank **Fred Miyahara** and **Abe Far** for going and doing a demonstration at the Japanese Festival. They did a great job and handed out SDBC information (see page 5 for picture).

We have a lot of new members so please make them feel welcome and offer any help that you can. I know we are a very sharing club.

Good growing this summer,

Steve Valentine



Dave Woodall was the raffle winner of Roy's demonstration piece.

Inside this issue

Club President's Message	p1	June Meeting Minutes	p4	Bill Murphy Notes	p6
July Program	p1	SDBC WAP Donation	p4	Refreshment & Benefit Drawing	p6
SDBC Pavilions at the WAP	p2	Bonsai Ideas #103	p5	SD County Fair notes & Awards	p7
July Education (Beginner & Intern)	p3	Membership Update	p5	Calendar of Events	p8
Club Officer Information	p3	Bill Murphy Memorial	p6	Meeting Agenda	p8

July Program

Many Thanks goes to **Roy Nagatoshi**, who made our June meeting fun and interesting. His demonstration was truly creative and educational. Roy is always generous to our club, plus he travels a long distance just for us and he also donated the demonstration tree. Thanks again Roy for the wonderful program.

For our July meeting will have very exciting program. We are hosting **Ted Matson** a true bonsai artist, and an excellent Teacher.

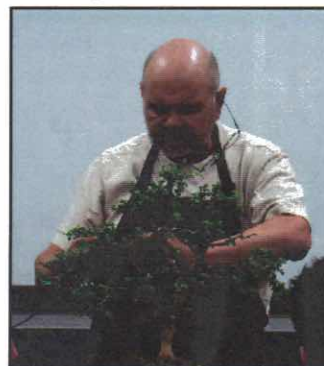
Ted started studying the art of bonsai in 1979 with bonsai masters in Southern California including **Melba Tucker**, **Roy Nagatoshi**, **Ben Suzuki**, **Warren Hill** and **John Naka**.

Ted started teaching bonsai in 1988. Through the years of teaching, Ted conducted many demonstrations, workshops, and classes in California and across the country. As a Result, he gets to travels a lot. Ted loves to teach bonsai, the thing that makes Ted exceptional is his explanations as he conducts a demonstration. In

addition, he is always in a learning mode. You have to be in order to keep up with all the many techniques and variety of plants that make up the world of bonsai.

Ted is also a past president of GSBF. The San Diego Bonsai Club always looks forward to hosting Ted and we are pleased and we thank him for accepting our invitation. Let's all welcome Ted Matson to our July meeting.

Pictures: Mario Condit



Ted Matson



Abe Far, 1st Vice President

San Diego Bonsai Club Pavilions at the Wild Animal Park

We had a wonderful cadre of volunteers in June working in both Bonsai areas at the Wild Animal Park. We are also most thankful for several new volunteers who joined. Special thanks to **Neil Auwarter, Susan Baker, Janet Beard, Andrew & David & Martha Choy, Joyce Goldman, John Jackson, Gary Jones, Ray Lish, Jon Petrescu, Sally Prestele, Harlan & Mary Ann Price, 'lyn Stevenson, Steve Valentine, John Voss, and Dave Woodall** for the enthusiastic help. Much was accomplished on this third Saturday of the month!

Neil brought lots of painting equipment to add to the things we already had acquired. The volunteer painters using brushes and rollers made quick work putting on the first acrylic coat of paint on the new tool/equipment shed in the construction area. It is truly a professional job! **John Jackson** also did some cement patching on the blocks at the base of the shed.

The bonsai were looking nice — especially after our members trimmed and refined several of them which had sprouted much new spring growth. The foliage around and under the bonsai benches also received some heavy trimming. Several trash containers were

filled with the cuttings and debris. Kudos to all the June volunteers for accomplishing so much. Thanks also for the members who spoiled us with refreshments. Everyone appreciates their generosity.

We hope all the Club members appreciate the work the volunteers are doing. Thanks to those who are not able to volunteer out at the WAP but who are supporting the fund raising efforts for the Pavilion construction! All our financial donors' names will be recognized in the new Pavilion in an appropriate tribute which we want to have in place for the opening in May 2011. **Marty Mann** has the forms and receipts for anyone who wants to donate or to add to their earlier contributions.

Our next workday will be July 17th but the volunteers may receive e-mails before then if help is needed in the interim. We are continuing to coordinate our construction efforts with the WAP staff and our other contractors.

Call or e-mail if you have questions or want to join our ongoing activities at the WAP.
'lyn Stevenson
SDBC-WAP Liaison

Pics by Harlan Price & Cary Valentine



Beginners Class

In the final phase of our beginners class using olives, we will repot our olive trees into bonsai pots. After your tree is in a pot, you will enjoy seeing it so much more!

Expect more growth from your olives in the late summer and fall, when their repotted roots begin to regenerate and encourage top growth.

So beginners, please bring your tree, your snippers, and your enthusiasm to the July class... and please be on time, since repotting takes a while to explain and then to do.

If you would like to sign up for the last class of the year, with very nice shimpaku junipers, please see Cary at the Members desk. The shimpaku junipers are quite appealing material!

Intermediate Class

Stuart Shim, the representative from HB101, will be joining us for a presentation about his product, and about tree supplements in general. We will discuss various supplements and their uses, and we will have a handout talking about them as well. Stuart is always supportive of the clubs and of bonsai, and he travels the area talking about horticultural care to various clubs and associations. He will also be bringing a new product for potting, an interesting and 'green' mixture that can replace pumice as a soil substrate. Join Stuart for his interesting and informative demo... you don't need to sign up for this one!

For the Intermediate class in August, John Voss will be bringing large junipers for a limited number of lucky people to work on, and he will lead the class, along with our able experts. John's trees have been worked on for years, and are ready for you to work on styling. HOWEVER, you will need to have your own tools, turntable, and wire. We will not be supplying those items. We will be supplying some choices in wedges, for you to use for propping the pot and discussing repotting angles. We would prefer that you have enough experience that you can work without a lot of basic guidance. The cost for these trees is \$100, but of that, \$50 is your donation to the San Diego Bonsai Club Pavilion at the Wild Animal Park, to be given in your name. Get a great tree, and become a part of the building fund for the Pavilion! See Cary to purchase this class... we will allow *first come, first choice on this class... so be early if you can!*

Joanie Berkwitz, VP Education
760-431-1014, mold40@roadrunner.com

The Bonsai Wire is a monthly publication of the San Diego Bonsai Club. All articles are provided by SDBC members. All articles must be received no later than 10 days after the club meeting by the The Bonsai Wire Editor, **Mario Condit** (mario.condit@sbcglobal.net). **Shirley Kavanaugh Jr.** is responsible for folding, labeling, and mailing. If you have any questions about article placement or special requests, please call the editor (see below for contact information) and leave a message. I will try to respond to you as soon as possible.

The Bonsai Wire

Is a published monthly by the San Diego Bonsai Club, Inc. a non-profit, educational organization 501 (c) (3).

San Diego Bonsai Club Board Members

- | | | |
|--|--|---|
| <ul style="list-style-type: none"> • President: Steve Valentine
(760) 445-2548
caryme2@yahoo.com • 1st Vice President: Abe Far
(619) 234-3434
abefar@cox.net • VP for Membership: Cary Valentine
(760) 445-2548
caryme2@yahoo.com • VP for Education: Joanie Berkwitz
(760) 431-1014
mold40@roadrunner.com • VP for Special Projects:
Maria Barbosa
(619) 606-6523
bonsaigarden@earthlink.net • Treasurer: Maria Barbosa
[see contact information above] | <ul style="list-style-type: none"> • Corporate Secretary:
Joyce Goldman
(760) 736-4735
jgoldmankfx@yahoo.com • Past President: Cindy Read
(619) 258-0469
perclr@cox.net • Japanese Friendship Garden, Bonsai
Curator: Fred Miyahara
(619) 286-8602
tmiya@cox.net • Wild Animal Park Bonsai Pavilion:
Curator: Steve Valentine
(760) 445-2548
WAP Liaison: 'lyn Stevenson
(858) 486-4805 • Web Master: Kevin Grey
Webmaster@sandiegobonsaiclub.com | <ul style="list-style-type: none"> • Historian: Cary Valentine • Public Relations: Maria Barbosa
(619) 606-6523
bonsaigarden@earthlink.net • Librarian: Jim Rendina • Sales Manager: Tom Anglewicz • Benefit Drawing Mgr: Jason Tucker • Refreshment Coordinator:
• Nellie Downie, (858) 581-9151 • The Bonsai Wire Editor: Mario Condit
(619) 463-1648
mario.condit@sbcglobal.net • Fall Show Chair: tbd
Co-Chair: tbd
Plant Sales: tbd
Reception: tbd |
|--|--|---|

This newsletter printed by **The UPS Store (www.upsprint.com)**.
4809 Clairemont Dr., San Diego, CA 92117, Ph: (858) 490-1690 Fax: (858) 490-1695

San Diego Bonsai Club

Minutes of the Regular Meeting of the Members

June 13th, 2010



- 1. Call to Order:** The regular meeting of members of San Diego Bonsai Club was called to order at 10:30 am by Steve Valentine, President. A quorum was present.
- 2. Approval of Minutes:** The minutes for the April 11 and May 2, 2010 meeting were approved.
- 3. Reports**
 - **Steve Valentine, President** 1) Announced that Bill Murphy, longtime SDBC member and for whom the Bill Murphy Award is named, died June 8. 2) Sunday, July 4, is Bonsai Day at the Del Mar Fair.
 - **Cary Valentine, Vice President, Membership,** 1) Welcomed new members.
 - **Joanie Berkwitz, Vice President Education,** 1) Thanked Dave Rochester and everyone who assisted in the beginner class. 2) Thanked Joe Dupont for providing the pixie bougainvillea used in the intermediate class. 3) July intermediate class will focus on supplements and include a presentation on HB101 and a new substitute for pumice by Stewart Shin. 3) The August intermediate class will include 20 junipers donated by John Voss at \$100 each. \$50 of each purchase will be donated to the New Pavilion Project in the participant's name.
 - **Maria Barbosa, Vice President, Special Projects,** The trip to several nurseries in the Los Angeles area is scheduled for Saturday, June 26.
 - **Fred Miyahara, Japanese Friendship Garden Bonsai Curator,** 1) The last Japanese Friendship Garden youth class of the school year will be at 10:30 a.m., Friday, June 25.
 - **Phil Tackill,** SD County Fair bonsai display is described as elegant. Judging took place June 12. Shirley Kavanaugh received Best in Show. Other awards to be announced once ribbons are placed.
 - **'lyn Stevenson, WAP Bonsai Pavilion Liaison,** 1) Passed out WAP volunteer ID cards and service awards/pins, as appropriate. 2) The next Pavilion work day is Saturday, June 19 – 9 a.m. 3) Announced that Guillermo Castano has graciously offered to design and produce the interior entry gate for the new pavilion. Conceptual drawings have been prepared. 4) The Finance Committee is pursuing a second grant from the County similar to the one received in 2009.
 - **Tom Anglewicz, Sales Manager,** The smaller meeting venue meant limited material available.
- 4. Adjournment:** There being no further business, the meeting was adjourned at 11:00 a.m. Guest Demonstrator: Roy Nagatoshi, owner of Fuji Bonsai in Silmar, CA, worked on a San Jose Juniper grafted with a shimpaku scion.

Respectfully Submitted,

Joyce Goldman, Corporate Secretary

Bus Trip Picture



The picture above is of the group that participated in the bus trip up to Roy Nagatoshi's place as well as some other stops (see President's Message).

Trips like these help to foster inter-club relationships and build stronger ties with other clubs. You will also have a chance to purchase many fine pots and plants during these trips. Thanks to Maria Barbosa for coordinating.

Bonsai Pavilion Donation

Gene Wiese - ficus forest

Pictured below is a new club member, Gene Wiese, who donated a ficus forest to the SDCB-WAP pavilion.

The ficus forest was started 12 years ago from cuttings. The ficus forest was shown at the 2010 Spring Show. Thanks Gene, for your most generous contribution.



Picture and Article submitted by: Cary Valentine

San Diego Bonsai

Bonsai Ideas

Marty Mann #103

With the arrival of summer most of the formal bonsai shows have passed and the bonsaiist had the pleasure of displaying his own trees. The objective of a good hobbyist is pride in the finished tree. Achieve this by maintaining good health, continuing a selective feeding routine, paying attention to weather conditions and setting guidelines for proper watering requirements. Summer maintenance prepares the trees for fall and winter. Plan ahead.

Start with the constant surveillance of fast summer growth. Warm days and cool nights encourage the development of new tip growth, long internodes and lush foliage. Maintenance must include pinching and plucking the growing tips as well as cutting back oversized branches. Reducing the branch extensions encourages shorter internodes, tighter evergreen formations and develops desirable twiggyiness on deciduous trees. To maintain form and design, keep trimming and shaping unwanted growth

A regular program of feeding during the summer months is important. Reduction of the nitrogen content of the fertilizer mix inhibits excessive green growth and allows for the formation of chemical changes that produce the best fall colors. Alter the basic mix of Cottonseed Meal (75%) and Bone Meal (25 %) by increasing the bone meal or using a 0-10-10 product. This provides more potassium and phosphorus to harden the woody growth and induce the development of fruit and flower buds for next year. Do not feed plants that appear to be suffering from summer stress caused by oppressive heat or moisture deprivation.

Don't use too much dry or cake fertilizers. Solid fertilizers usually do not decompose into usable substances for several weeks therefore they should not be applied late in the summer. Use liquid Miracle Gro at this time. Yellow color and leaf drop may indicate the need for nitrogen or iron. This condition can also suggest overwatering or poor drainage.

Summer is the time to monitor the Shari and Jin of styled trees. A second application of Lime Sulfur (Orthorix Dormant Spray) can be made to damp dead wood areas to protect against wood rot. Avoid seepage of this chemical into the soil and roots. Avoid live wood surfaces. Watch training wires. Fast summer growth of the woody portions of trees can quickly engulf the wire and cause unsightly and serious damage.

Azaleas require special care and attention early in July. Hopefully they have just experienced a flush period of new growth and an extended period of colorful, showy, blooms. Selective trimming may be done at this time. Remove the spent flowers and shoots that have grown upward or downward.

Trim Azaleas back to at least two or three leaf sets on each shoot to allow new buds to form and new branch divisions to occur. Do not cut back to bare wood at this time of year. Azaleas generally bud back on bare branches in the spring. Summer cutting in this manner risks branch die back. Branches may be carefully wired to establish form and style. If the trimming is done after July you risk losing the plant's ability to form new flower buds for a show of color next spring.

This article has been extracted from the recently published book called "Bonsai Ideas"© by Marty Mann. Material is not to be copied without publisher or author's permission. JULY 2010

Membership Update!

Please welcome our newest Club Members:

Kathy and Mark Edgar*
Tray Lutes and Emillie Penrod

* Also members of San Pu Kai

Our club is one of the best clubs in California and we have so much to offer to bonsai enthusiasts at every level. We have a large percentage of new members. Please do what you can to make them feel welcome and show your love for bonsai. In addition, explaining some of your experiences and in general, talking about all the wonderful things our club has to offer will help the new members to fit in and become part of our family.

If there are any questions, please feel free to ask me. I always have lots of information on the latest goings-on in the bonsai world as well as the class sign up sheets. See you at the next meeting.

Membership VP, Cary Valentine

San Diego Japanese Festival



Pictured above are Abe Far (right) and Fred Miyahara (left) at the San Diego Japanese Festival. They represented the San Diego Bonsai Club at this event.

In Memoriam – July 11, 2010 - 1:00 p.m.



Many of us are remembering with great fondness and affection, our friend and fellow Bonsai member, Bill Murphy, who recently passed and who contributed so much to the Club and to the lives of those who were close to him. We will be honoring him in a short memorial gathering immediately following the next Club meeting on July 11, 2010, which will be held in the same room that the Club meeting will be held on that day.

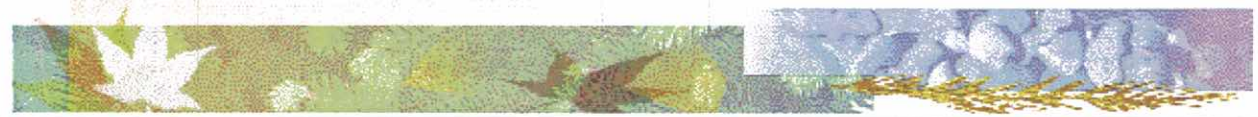
If you wish to participate in this event, please bring a potluck dish to share, stay after the meeting and you will have an opportunity to share any thoughts you care to express about Bill. We will spend a few minutes in a memorial celebration of Bill's life as a friend, mentor and Bonsai teacher/enthusiast, led by Gary Jones, to remember the trees that he worked n which will be on display, and to talk about what he meant to us, in the different ways that we knew him. Please join us then.

Picture by: Abe Far

By Karla Kelly-Jones



Bill Murphy



Bill Murphy

11/15/25 – 06/09/10
Retired Elementary School Principal (36 yrs)

Bonsai ... Bill started about 1958, and he worked with Stan Childs and Herb Markawitz. He operated his bonsai booth at the Del Mar Fair in 1958. Bill also sold bonsai, gave demonstrations, and setup small displays for different styles.

This led to the start of the bonsai display area at the fair. Today, the awards are given here and it is a vital part of the fair. The Del Mar Fair Management recently presented Bill with a special award for his 42 years of outstanding development in support of the Art of Bonsai.

Bill discovered how great Tecate Cypress were for making bonsai. He also operated a Bonsai Nursery in Rancho Santa Fe. He made and sold bonsai in a special booth he rented each year at the Del Mar Fair.

Without Bill's interest and skill in bonsai, it would not be such a prominent part of today's fair. He designed each of the many different displays each year. He also setup and arranged all of the shows. He also designed and developed a security system to keep the plants safe. The long time director of the fair liked Bill and anything Bill wanted at the Fair, the director made it possible.

Bill saw to it that all the plants were watered each day as well as protected. Bill and Dr. Frank Dixon (bonsai member) saw to it that display plants were present for the fair.



Larry Upp

June Refreshments

Thanks to everyone that brought in yummy treats. A bit of food at the end of the meeting always makes for a good snack at the end of our busy morning.

- Nellie Downie, Glenn Leeks, Maude Laracy, Maria Barbosa, Susan Baker, Cary Valentine, Abe and Cristina Far, Claude Poissonniez, Ray Lish, Roger and Olga Ziegelman, Harlan and Mary Ann Price, Joyce Goldman, Candice Lyam, Robert Myer.**

Nellie Downie, Refreshment Coordinator

www.sandiegobonsaiclub.com

June Benefit Drawing

A big thank you to all the folks that brought in items for the benefit drawing. This is a key fund raising vehicle for the club. Make sure to check your spare supplies, tools, and pots. These all make good items for the benefit drawing table.

- Dave Woodall, Dennis and Sue Wagner, Jon Petrescu, Terri Petrescu, Martha Choy, Jim Redina, Abe Far, Ken Bross, Claude Poissonniez, Joan Holliday, Gary Jones, Karla Jones, Shirley Kavanaugh, Joynce Goldman, George Young.**

Jason Tucker, Raffle Coordinator

SAN DIEGO COUNTY FAIR 2010

The San Diego County Fair provides a venue for bonsai displays and for other horticultural endeavors. In addition, there are venues for livestock, gems, art (in various forms), carpentry, quilting, sewing, knitting, and others.

I had the unique opportunity of visiting the fair this year for the first time. I have been in San Diego since 1996, and this year, my wife and I decided to go.

By the 9th hour, we were tired. Aching feet, sore legs, and tummies bulging (yes, we went for the food!), we found refuge in the shade of the horticulture area. We came across the bonsai displays and walked past them, peeking into the plexiglass and reading the names of the

contestants. We recognized many of the names. As we neared the end of the displays, we were met by Cindy Read, and Phil and Janet Tackill. It was nice to see familiar faces and even nicer to chat about the goings on.

The Asian Arts Awards section was submitted by Phill Tackill in order to recognize the various winners and the categories.

Mario Condit, Editor

Silver waterfalls
Bridal veils of the mountain
Ever falling down

Marty Mann

July 2010

Asian Arts Awards

—Awards of Merit—

Ishi Atama
Tray Landscape Club
Hon Non Bo
Bonsai and Beyond
Bonsai and Beyond II

Classic Bonsai Competition Small Bonsai

1ST Shirley Kavanaugh Jr.
2ND David Woodall
3RD Cindy Read
3RD Brenda Storey

Medium Bonsai

1ST William J. Jackson
2ND David Woodall
3RD Cindy Read
3RD Shirley Kavanaugh Jr.

4TH Van Moch Nguyen

Large Bonsai

1ST David Woodall
2ND William J. Jackson

Forest

1ST Shirley Kavanaugh Jr.
2ND Shirley Kavanaugh Jr.
3RD William J. Jackson

Novice

1ST Tom Braun
2ND Bonnie Hoy
3RD Tom Braun

Classic Bonsai Competition Best In Show

1ST Shirley Kavanaugh Jr.
Bill Murphy Award,
Best Novice
(sponsored by SDBC)
— Tom Braun —

Bonsai & Beyond Tray Landscape

1ST Shirley Kavanaugh Jr..
2ND Brenda Storey
Hon Non Bo
2ND Brenda Storey
2ND Shirley Kavanaugh Jr.
3RD Van Moch Nguyen

Penjing

1ST Shirley Kavanaugh Jr..
Saikei
1ST Cindy Read

Rockscape

1ST Shirley Kavanaugh Jr.

Outstanding Tray Landscape- Most Creative Entry

Cindy Read

Kuma Bonsai Award for Best Use of Cactus or Succulent as a Bonsai

Van Moch Nguyen

Noteworthy Plant Awards-TLC Booth

Shirley Kavanaugh Jr.-Youpon Holly
Shirley Kavanaugh Jr.-Operculicarya
Planting

Bonsai & Beyond Jiusan Bonsai West Education Award

Phil Tackill/Janet E. Wanerka

TLC

Bonsai & Beyond II
Michael/Joyce Buckner- Our
Honorees

Competitive Bonsai

Tray Landscape

Private Awards

Bill Murphy

Kuma Bonsai Award-Cindy Read

Jiu San Bonsai Award

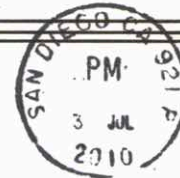
Phil Tackill/Janet Wanerka

**The setup of these booths, back drops,
watering, and maintenance is totally
undertaken by "Bonsai and Beyond".**

For those of you who have received and reviewed the April/May/June issue of the BCI Magazine, you will be aware of the photo of one of the members of the SDBC, Phil Tackill, whose Bonsai is part of the National Bonsai and Penjing Museum in Washington, D.C. He is rightly pleased that his Forest Planting is displayed prominently, along with Bonsai greats, Princess Chichibu, Harry Hirao and Vaughn Banting. It is a great honor for him and it places San Diego on the Bonsai Map.

Phil Tackill, Janet Wanerka

San Diego Bonsai Club, Inc.
PO Box 40037
San Diego, CA 92164



ADDRESS CORRECTION REQUESTED

David, Martha & Andrew Choy
1144 13th Street
Imperial Beach CA 91932

9153233675 0010



San Diego Bonsai Club Calendar of Events

- July 11th Sunday
Regular SDBC Meeting (Featured Guest: **Ted Matson**)
- July 17th Saturday
Wild Animal Park Workday, 9am to 12pm
- August 8th Sunday
Regular SDBC Meeting (Featured Guest: **Jim Grimmel**)
- August 21st Saturday
Wild Animal Park Workday, 9am to 12pm
- September 12th Sunday
Regular SDBC Meeting (Featured Guest: **Tak Shimazu**)
- September 18th & 19th Saturday (setup: 16th & 17th, teardown: 19th)
SDBC Fall Show
- September 24th Friday
Japanese Friendship Garden, Kids Class 10:30 to noon
- October 10th Sunday
SDBC Meeting at Poway Lake
- October 16th Saturday
Wild Animal Park Workday, 9am to 12pm
- October 22nd Friday
Japanese Friendship Garden, Kids Class 10:30 to noon
- November 14th Sunday
Regular SDBC Meeting (Featured Guest: **TBD**)
- November 20th Saturday
Wild Animal Park Workday, 9am to 12pm
- November 19th Friday
Japanese Friendship Garden, Kids Class 10:30 to noon

Sunday, Jul 11th 2010
Balboa Park, Room 101
Casa Del Prado

Meeting Agenda

9:00 am	Beginner's Class	Room 104
9:15 am	Library Opens	Room 104
	Intermediate Class	Room 101
10:30 am	Business Mtg	Room 101
11:00 am	Ted Matson Bonsai Demo	Room 101
12:00 am	Lunch	