

The Bonsai Wire

February 2010

Message From the President

A very special 'thank you' to **Kathy Shaner** for flying down just for the day to spend time with us. It was a long day for her but she likes our club a lot. I know that we all really enjoy the meetings with Kathy and in addition, we all get to learn so much from her. Congratulations go to **Lisa Welby** who won the demo tree that Kathy worked on. We hope to see it in a show someday.

Thanks go to **Joan Holliday** for taking on the Spring Show Reception. We all know she puts on a great party. Joan will need lots of help with this. We still are looking for a show chairman and co-chairman. There are lots of club members who help out, so do not feel you have to do it all. This is a great time for new members to sign up to help and get involved. It is a great way to learn more about bonsai show fundamentals, care and maintenance prep for a show, and you also spend quality time club members during this activity. You are guaranteed to have a great time.

Thanks go out to everyone who is helping out at the Wild Animal Park. There is a lot of work to do in

the existing bonsai pavilion and in the new bonsai pavilion. This is a great learning experience, all skill levels are welcome. Please see or contact **Iyn Stevenson** for details.

Many thanks also go out to all the teachers who helped with the Japanese Friendship Garden 5th graders. What a wonderful way to make a difference in young kid's lives. Some day they may be our next bonsai leaders. To help teach or support this program, please see **Fred Miyahara**.

There are so many ways that you can help out in your bonsai club. Help is needed in the morning setting up for the classes, as well as staying late and cleaning up after the club meeting. **Nellie** is always in need of help with feeding our members after the meeting. Any pot luck dish that you can bring to share is welcome. Bonsai seems to make us all hungry. Our club raffle table is always in need of donations and do not forget to buy your raffle tickets from **Jason**. All this goes back to help the club make a better club for YOU.

HAPPY VALENTINE'S DAY! *Steve Valentine*

Inside this issue

Club President's Message	p1	Club Officer Information	p3	February Membership	p7
February Program	p1	January Meeting Minutes	p4	Refreshment & Benefit Drawing	p7
Education (Beginner & Intern)	p2	Bonsai Ideas #98	p5	WAP Invitation	p7
WAP Pictures	p2	Misc Club Pictures	p5	Calendar of Events	p8
Bonsai Pavilions at the WAP	p3	Special Projects Article/Pics	p6	Meeting Agenda	p8

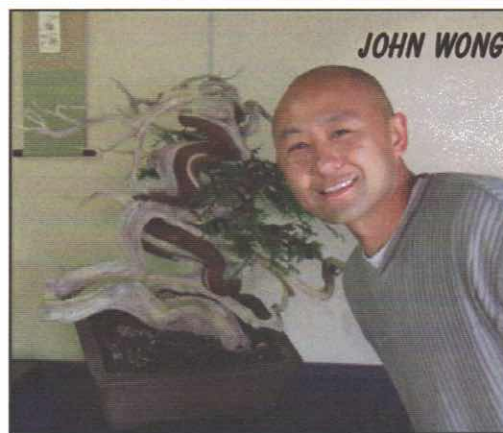
February Program



We started our 2010 first meeting in January with our wonderful guest, **Kathy Shaner**. Her demonstration was educational and entertaining. The demo tree became a beautiful Bonsai and the lucky winner was **Lisa Welby**. We all thank Kathy again for coming down on a one day trip just for our club.

Our goal as an educational club is always to promote young bonsaist. During my visit to the GSBF Convention in Riverside, I was fascinated by the work of **John Wong**. He is a young talented bonsai artist, John was born 1968 in Taipei, and he is a corporate lawyer. He studies under **Mas & Gary Ishii** and **Kenji Miyata** at Chikugo-Eo in Gardena, California. John has also studied under Seiji Sakurai at Sakurai Sansei-En in Koshigaya, Japan.

John is going to be conducting a demo at our February meeting. I want to thank John for accepting our invitation.



John is pictured above, taken while training at Koshigawa Japan. You can also read an article by John Wong in the July/ August 2009 issue of Golden Statements. Photo provided by Abe Far.

Abe Far, 1st Vice President

Beginners Class for February 2010

The Beginners class for 2010 started out with a bang, with a great group lead by **John Voss**. **John and his able volunteers** started the beginners out with their twisted pomegranate trees, tool and book. For our February meeting, we would like the beginners to bring back their tree, their tool, and the blue cloth and we will begin trimming and styling the trees. Wire will be supplied, and you just have to bring your inspiration!

Be ready to start at 9 am in the library, and you will be styling! For those of you who missed the Beginners class, the next session starts in April, so you will want to get on the list. That class is likely to fill up quickly. We will be working on olives in April.



Joanie Berkwitz, VP Education
760-431-1014, mold40@roadrunner.com

Intermediate Class for February 2010

In our continuation of last year's Nipomo Black Pine class, the class participants will be repotting their Nipomo pines. The cost for a pot and soil will be \$15, or you can bring your own. The soil is an excellent pre-mix especially for pines. **Fred Miyahara** will be leading this repotting class. So, those of you who purchased last spring's Nipomo pines, bring your tree, some tools for repotting, and your excitement and prepare to repot!

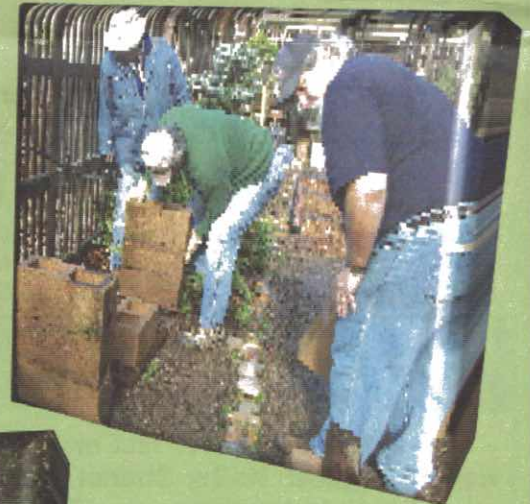
sure would love to see it.

In March, we will have Nipomo pines available again. They will be picked up in early March and arrive in time for the meeting. A sign up sheet will be at the Membership desk, and more details will be available at the February meeting. These hand-picked trees always sell out, so be sure to get on this list if you want to buy a good Black Pine and learn how to style and repot it.

If you have a Nipomo pine from earlier sessions, and you would like to bring it in and show off it's progress, we

Joanie Berkwitz, VP Education
760-431-1014, mold40@roadrunner.com

WAP Pictures



Pictured above is Terri Petrescu trimming and maintaining one of the bonsai at the WAP-an adopted tree. Above and center is Maria Barbosa. She is feeding one of the trees the light fertilizer that 'lyn mentions in her article (next page). To the immediate right (left to right) are John Jackson, Dave Woodall, and 'lyn Stevenson. They are busy at work doing all of the tasks that 'lyn has described in her WAP article.

Pictured above are Harlan Price, Jon Petrescu, and Steve Valentine repairing one of the bonsai stands. The heavy rains were most likely responsible for it's need of repair. I recall helping build this one several years ago. Our pavilion requires almost constant maintenance in one form or another. On page 7, 'lyn has written a good over view of what the SDBC's relationship is with WAP Bonsai Pavilion.

Photos courtesy
Maria Barbosa, Harlan Price, and
Cary Sullivan.

Mario Condit, Editor

Bonsai Pavilions at the Wild Animal Park

Between the much needed rains in January, our volunteers were able to accomplish worthy activities in both bonsai areas at the WAP. Many thanks to: **Maria Barbosa, Maria & Tina Flores, John Jackson, Jim Kirchmer, Marty Mann, Jon & Terri Petrescu, Harlan & Mary Ann Price, 'lyn Stevenson, Cary & Steve Valentine, John Voss, and Dave Woodall.** Some of the volunteers have elected to be special care takers for specific trees. **Curator Steve** and **Cary** have compiled a notebook with photos, history, and relevant info on each tree and the volunteers can now keep that info up to date. **Terri and John Voss** made significant grooming changes on their "adopted" trees this month. All the trees received a light winter fertilizing from **Maria Barbosa and Cary.** Then, due to the heavy rains and soggy paths, all the low, puddled, path areas in the pavilion were filled in with mulch. **Jon, Harlan, and Steve** did a super job restabilizing one of the show benches that was about to collapse. General winter clean up was done by all. Beautiful!

In the upper construction area, we were really pleased to see how well prior projects survived the rains: the new drains that the WAP installed worked extremely well and the retainer block walls that **John Jackson** planned and engineered earlier remained intact and strong.

Maria and Tina Flores, Jim, John Jackson, and 'lyn cleared the smaller rocks in front of the waterfall

area so that the WAP can remove the large plants there to another area of the Park. Then, they cleaned out the closet in the back of the construction pavilion and started weeding out trash from salvageable materials. **Maria** and **Tina** have offered to be in charge of the closet and keep it organized! WOW! **Dave** and **John** also started another salvage project with five benches up there. **John** also brought some blocks and a granite slab to test possible, potential bonsai stands. Looks very promising!

As you can tell from this report, much significant activity goes on when we meet at the Pavilions on Saturday. Please consider joining this SDBC worthy activity. Your interest and participation is needed greatly!

Besides our bonsai volunteer participation, the WAP is now implementing, updating, and orientating all WAP volunteers with special horticulture meetings. All the bonsai volunteers are being asked to attend these special sessions. Photos and special entry cards will be distributed along with an electronic entries at the back gate. Volunteers' hours will be kept and awards given in this program: awards include special shirts, discounts, and passes. About 15 of our volunteers have already participated in this initial orientation and will be entered into the database. Call **'lyn** for further information and administration contacts.

'lyn Stevenson, SDBC/WAP Liaison,
858-486-4805, inthegrove@cox.net

The Bonsai Wire is a monthly publication of the San Diego Bonsai Club. All articles are provided by SDBC members. All articles must be received no later than 10 days after the club meeting by the The Bonsai Wire Editor, **Mario Condit** (mario.condit@sbcglobal.net). **Shirley Kavanaugh Jr.** is responsible for folding, labeling, and mailing. If you have any questions about article placement or special requests, please call the editor (see below for contact information) and leave a message. I will try to respond to you as soon as possible.

The Bonsai Wire

Is a published monthly by the San Diego Bonsai Club, Inc. a non-profit, educational organization 501 (c) (3).

San Diego Bonsai Club Board Members

<ul style="list-style-type: none"> • President: Steve Valentine (760) 445-2548 caryme2@yahoo.com • 1st Vice President: Abe Far (619) 234-3434 abefar@cox.net • VP for Membership: Cary Sullivan (760) 445-2548 caryme2@yahoo.com • VP for Education: Joanie Berkwitz (760) 431-1014 mold40@roadrunner.com • VP for Special Projects: Maria Barbosa (619) 606-6523 bonsaigarden@earthlink.net • Treasurer: Tara Cobbs tara@cobbsville.com 	<ul style="list-style-type: none"> • Corporate Secretary: Joyce Goldman (760) 736-4735 jgoldmankfx@yahoo.com • Past President: Cindy Read (619) 258-0469 perclr@cox.net • Japanese Friendship Garden, Bonsai Curator: Fred Miyahara (619) 286-8602 tmiya@cox.net • Wild Animal Park Bonsai Pavilion: Curator: Steve Valentine (760) 445-2548 WAP Liaison: 'lyn Stevenson (858) 486-4805 • Web Master: Kevin Grey Webmaster@sandiegobonsaiclub.com 	<ul style="list-style-type: none"> • Historian: Cary Sullivan-Valentine • Public Relations: Maria Barbosa (619) 606-6523 bonsaigarden@earthlink.net • Librarian: Jim Rendina • Sales Manager: Tom Anglewicz • Benefit Drawing Mgr: Jason Tucker • Refreshment Coordinator: Nellie Downie, (858) 581-9151 • Correspondence Secretary: Maria Barbosa • Spring Show Chair: N/A Co-Chair: N/A Plant Sales: N/A Reception: Joan Holliday • The Bonsai Wire Editor: Mario Condit, (619) 463-1648 mario.condit@sbcglobal.net
---	--	--

This newsletter printed by **Total Document Solutions (www.tdusa.com)**.
2984 National Ave, San Diego, CA 92113, Ph: (858) 273-8000 Fax: (858) 273-8181

San Diego Bonsai Club

Minutes of the Regular Meeting of the Members

January 10th, 2010



1. **Call to Order:** The regular meeting of members of San Diego Bonsai Club was called to order at 10:30 am by Steve Valentine, President. A quorum was present.
2. **Approval of Minutes:** The minutes for the December 13, 2009 meeting were approved.
3. **Reports**
 - **Steve Valentine**, President 1) Asked Guest Demonstrator, Kathy Shaner, to briefly speak about bonsai technique on Japanese Flowering Quince; and 2) Presented 2008-9 board members Joyce Goldman, Gary Jones (not in attendance), Terri Petrescu, and Mary Ann Price with a token of the Club's appreciation for their service.
 - **Cary Valentine**, Vice President, Membership, 1) Introduced the new members; and 2) Reminded members to renew their dues.
 - **Joanie Berkwitz**, Vice President Education, 1) Reported that both the Beginner and Intermediate classes were at capacity; 2) thanked Beginner Class instructor, John Voss, and Intermediate Class instructor, Cindy Read for sharing their time and knowledge; and 3) thanked John Voss for providing wonderful flowering quince stock for the Intermediate Class.
 - **Tara Cobbs**, Treasurer, reported the bank balances.
 - **Maria Barbosa**, Vice President, Special Projects, 1) Reviewed the itinerary for the Winter Silhouettes bus trip, scheduled for Saturday, January 16. The trip will include two shopping stops; 2) Urged everyone who can to plan to participate, as current sign up is insufficient to warrant a large bus; and 3) The next trip will be to the Bonsai-a-Thon at Huntington Library and Botanical Gardens, Saturday – February 27.
 - **Fred Miyahara**, Japanese Friendship Garden Bonsai Curator, 1) Announced this year is our 11th season conducting classes at the Garden for 5th grade students; and 2) The next class will be at 10:30 a.m., Friday, January 22, 2010. Marty Mann volunteered to be responsible for the class in Fred's absence; 3) Volunteers are always needed for this once-a-month, 1-1/2 hr. Class.
 - **'lyn Stevenson**, WAP Bonsai Pavilion Liaison, 1) In 'lyn's absence, Marty Mann gave the new members a brief overview of our activities at the Park; and 2) Announced that the next work day will be Saturday, January 23, 2010 – 9 a.m. to 12 Noon.
 - **Tom Anglewicz**, Sales Manager, 1) Reported we are now selling a small tool bag that will accommodate both tools and a spool of wire; and 2) Next month, the inventory will also include copper wire.
 - **Abe Far**, Vice President, 1) Reviewed the 2010 program schedule. The complete schedule is posted on the Club's web site; and 2) Urged members to become involved and volunteer.
4. **Adjournment:** There being no further business, the meeting was adjourned at 11:00 a.m. Guest Demonstrator: Bonsai Master, Kathy Shaner worked on a 10-year old Shimpaku, provided by Steve Valentine.

Respectfully Submitted,

Joyce Goldman, Corporate Secretary

www.sandiegobonsaiclub.com

*A sea to nowhere
Gray with foreboding vastness
The dawning of the day*

Marty Mann

February 2010

San Diego Bonsai

Bonsai Ideas

#98 February, 2010

It is the best season to study plant designs. Spend some serious time with each of your trees by a careful review of the branch structures, the trunk lines and their placement and relationship. In the case of deciduous trees, you can see them clearly without the disguise of a blanket of leaves to hide their faults and problem areas. Remember the basic bonsai design principals of crossing branches, bars, angles, elevations, relationships to the trunk movement and the important points that may distinguish your tree's quality from just any other bonsai. Your study may disclose the need to rewire and reposition various branches. Do so with great care since the dormant season is a time of brittle branches on most varieties of trees.

It's still too early to concern yourself about the feeding of the trees. But, this is a good time to prepare your fertilizer supplies. Chemical and organic liquid fertilizers require no advance planning. They can be freshly mixed when you are ready to apply. If you are a user of the recommended dry mixes such as Cottonseed Meal (75%) with Bone Meal (25%), now is the time to make a supply. Keep the finished product in a dry place. If it gets wet it will begin to ferment and will drive you out of your home! Acid based fertilizers are best for azaleas and camellias as well as conifers and junipers. The idea, when feeding in early spring is *slow release*. Don't rush your trees into a spurt of new growth too soon. Don't begin to feed until February.

If deciduous trees start to sprout, bring them gradually into sunlight. If the tree is kept in a shaded area, new growth will tend to be long, leggy and weak. Be careful to

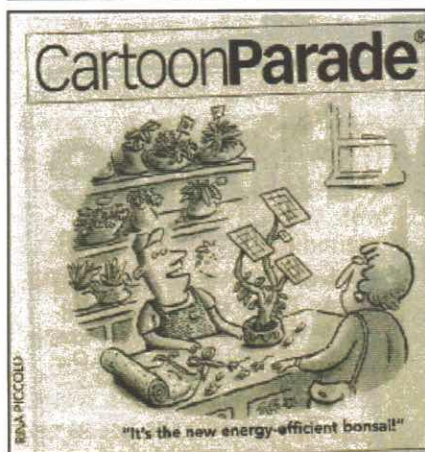
protect this new growth from any surprise cold or frost that will cause dieback. When warm weather comes, so does the ever present insect population. Be prepared to spray early with a good commercial insecticide or miticide. Follow manufacturer's directions for your mixtures.

During this idle time, in February, occupy yourself with a program of pot cleanup. All those pots, which have been sitting around and waiting for your repotting activities to begin, have probably accumulated layers of soil and lime deposits. Scrub them with a strong soapy solution and bleach. Apply a lime off cleaner or a strong vinegar solution to the white spots, or just some elbow grease and cleanser. Try using one of the new Japanese erasers to work on the stubborn spots. Rinse the pots well. Allow them to dry in the full sun to prevent infestation carryover.

Survey the finished trees in bonsai pots. Are they still a proper match in size or color to the tree? Has the maturity and styling of the tree changed it enough to consider repotting into a new pot? Is it taller, wider, fatter? Now is the time to redesign completed trees. Make a list of the trees that will require repotting. Place a marker in the pots that require attention this year for identification. Begin with the conifers, followed by the deciduous trees, then the flowering and fruiting trees. Begin while they are still in a dormant stage or just beginning to emerge. Wait until later in February. Go easy on any pruning that may be required, particularly on these early transplants. Let the branches mature. Wait until the sap begins to flow before you do any serious pruning or pinching of the new growing tips.

Marty Mann

This article has been extracted from the recently published book called 'Bonsai Ideas' © by Marty Mann. Material is not to be copied without publisher or author's permission. Feb 2010



The cartoon above was submitted by Harlan Price. The caption may be obscured, but it reads "It's the new energy-efficient bonsai".
Cartoonist Rina Piccolo.



The picture above is Kathy Shaner working with the SDBC Shohin study group. Left to right: Cristina Far, Shirley Kavanaugh, Dave Woodall, Terri and Jon Petrescu, Sue Wagner, Kathy Shaner. Photo by Maria Barbboosa.



Kathy Shaner (left) with Paul Welby (right), pictured with the shimpaku demonstration tree. Lisa (Paul's wife), was the raffle winner. Embedded is a picture of Kathy and the tree before the demonstration.

Special Projects
Bonsai-A-Thon
February 27, 2010

The February meeting will be your last chance to sign up for the Saturday, February 27th bus trip to San Marino for the 14th annual Bonsai-a-Thon. This is a great trip and a great way to spend the day and meet lots of great and fun bonsai friends.

Please note, to take better advantage of the day, and so we don't miss the daily raffle, we have changed the bus departure to leave **Balboa Park (San Diego) at 7:00 a.m.** promptly--- with a pick up from **Carlsbad at 7:30 a.m sharp.** We plan to be back to San Diego by 7:00 p.m.

Bonsai-a-thon is the major fundraiser in support of the GSBF Collection held at its home at the Huntington Library and Botanical Gardens and is similar to a mini-convention--- with no admission fee. **The Huntington will give to all Bonsai-a-thon registrants free access to the library, museum, and all of the unique gardens including the new Chinese Garden (a badge giving you this access will be given to you upon entering the bus).**

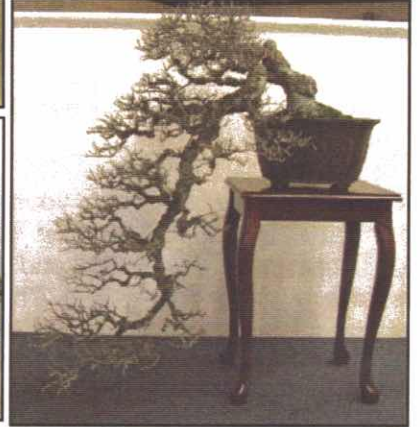
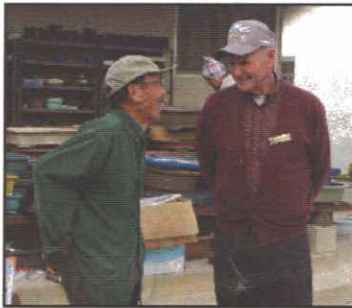
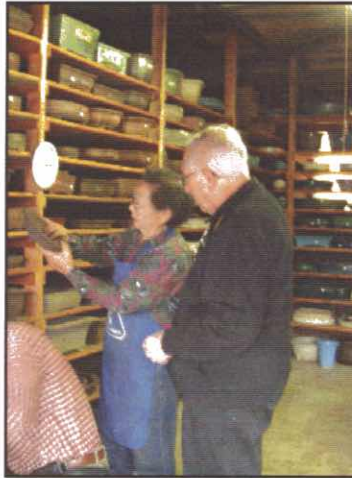
There will be exhibits of masterpiece examples of bonsai and ongoing demonstrations of initial and advanced bonsai techniques.

Jim Folsom, Director of the Gardens will conduct a tour and dedicate the New Bonsai Courts in the Japanese Garden at 10:00 am. There will be raffles and live auctions of the demo trees and donated bonsai material. The many vendors at the bazaar will have available top-quality plants, tools, pots, books and other bonsai related material. Additionally, breakfast and lunch will be available at a nominal charge. The event is a fundraiser, so bring bonsai-related donations for the raffle.

The cost is \$40.00 for members and \$45.00 for non-member guests. Please see **Maria Barbosa** for the sign up sheet and to pay for the trip. If you need any additional information about the trip, please feel free to call or RSVP at 619-606-6523 or 619-606-6523. Please sign up now for this great trip!

Maria Barbosa,
 VP Special Projects

Special Projects - Winter Silhouettes
Bus Trip January 2010



These photos are of the winter silhouette's trip and included a stop at Bruce and Yaeko Hisayasu's shop, as well as Jim Barrett's place. Immediately above are two prime examples of a winter silhouette bonsai. You can clearly see all of the tree's branch ramification details without the hindrance of foliage. Top left are Yaeko and Marty Mann going over pots. Below them are Bruce and Everett. Below them is Maria Barbosa with Jim Barrett in the fore ground reviewing a variety of pots. The selection was awesome. To the immediate left (left to right) are Claude Poissonniez, Marty Mann, Terri Petrescu, and Nellie Downie reviewing some of Jim's bonsai under shade cloth. Overall, the trip was a huge success. Folks got to see a good show and got to shop at a couple places for pots and plants. If you missed it this year, put in on your schedule for next year.



Photographs and notes provided
 Cary Sullivan

February Membership Update!

Please welcome our newest Club Members:

**Desmond Rhea, Neil Auwater,
Lotus Fragola, John Delgado,
Beth Leeks, and Logan Faubin.**

Please see Cary if you did not get a new member package. I will have them for you at the February meeting along with SDBC membership cards.

\$\$\$ Remember: "DUES ARE DUE" \$\$\$

- ▶ There is an envelope for you in the "DUES" box – names in alphabetical order.
- ▶ Inside the envelope is a card. On one side of that card is a duplicate of your newsletter mailing label – on the other side will be room to make any corrections to our current records – address, phone, email. **Please make any changes on the card and return the card to the envelope – we use that to update our Club Roster.**
- ▶ Place your payment in the envelope - \$25/Single. **Add \$10 for each Family Member.** (If you wish to drop a family member or change a family member designation, please note that on the card, as well.) **Cash or checks are accepted – no credit cards.**
- ▶ Drop the sealed envelope in the "PAYMENTS" box. You are good for another year!
- ▶ **SDBC is making a move to "go green". If you would like to receive your monthly newsletter by EMAIL, there is a box on the card to check if you would like to join in our efforts. If this is something you would like to do, please check the box and enter your current email address so records are correct and you do not miss an issue.**

Cary Valentine, VP - Membership

Refreshments

Thanks to the following folks who brought in yummy treats for the meeting.

**Claude Poissoniez, Nellie Downie,
Maria Barbosa, Charlie Mosse,
Shirley Kavanaugh, Terri Petrescu,
Susan Baker, Trisha Bonapace,
Ruth and Marty Mann, Linda & Ray Lish,
Abe & Cristina Far, Florentina Cruz,
Sue and Dennis Wagner, Joan Holiday,
Pat Singer, Teruko Jones,
Maude Laracy and Cary Sullivan.**



To the left is a watermelon that has been carved by Sue Wagner. Her detailed carvings are so elegant, detailed and full of depth. Photo by Abe Far.

Nellie Downie,
Refreshment Coordinator

You are Invited to Participate

**THE SAN DIEGO BONSAI CLUB
HAS BEEN IN CHARGE OF THE
BONSAI PAVILION AT THE
WILD ANIMAL PARK
SINCE ITS INCEPTION OVER
25 YEARS AGO.**

- 👤 The Club maintains the bonsai, receives donations of money and trees, and helps all the volunteers improve their learning of this wonderful art.
 - 👤 As a member of the SDBC, you are cordially invited to join this volunteer group.
 - 👤 There is much camaraderie as well as learning and some special privileges involved in being a WAP/SDBC volunteer.
 - 👤 Our normal "working" day is the 3rd Saturday of each month from 9:00 a.m. to Noon. Some volunteers are there each month and others come only a few times a year.
 - 👤 There are other Saturdays too when we are there since we are also building a new, much larger Bonsai Pavilion on the hill above our current location. Much help is needed in both places!
 - 👤 See Steve Valentine, Curator, or 'lyn Stevenson, WAP-SDBC Liaison, for more information and/or to sign up!
-

Benefit Drawing

The Benefit Drawing table is one of our regular fund raising activities. Before the next meeting, go through your bonsai inventory and see what you haven't used or if considering downsizing, bring in your extras. Thank you for your contributions.

**John Voss, Claude Poissoniez,
Shirley Kavanaugh, Dave Woodall,
Stephen Eskie, Jon Petrescu,
Marty Mann, Abe & Cristina Far,
Vernon Rutherford, Charlie Mosse,
Steve Valentine, and SDBC.**



Photo by Abe Far.



Jason Tucker,
Raffle Coordinator

San Diego Bonsai Club, Inc.
 PO Box 40037
 San Diego, CA 92164



ADDRESS CORRECTION REQUESTED

San Diego Bonsai Club Calendar of Events

February 14th Sunday
 Regular SDBC Meeting (John Wang [shohin])

February 20th Saturday
 Wild Animal Park Workday, 9am to 12pm

February 26th Friday
 Japanese Friendship Garden, Kids Class 10:30 to noon

February 27th Saturday
 Bonsai-A-Thon, Bus Trip, GSBF, Huntington Library

March 14th Sunday
 Regular SDBC Meeting (Harry Hirao)

March 20th Saturday
 Wild Animal Park Workday, 9am to 12pm

March 26th Friday
 Japanese Friendship Garden, Kids Class 10:30 to noon

April 3rd & 4th / Saturday and Sunday
 WAP Garden Societies Celebration 2010-SDBC display

April 11th Sunday
 Regular SDBC Meeting (Bob Hilvers)

April 17th Saturday
 Wild Animal Park Workday, 9am to 12pm

April 23rd Friday
 Japanese Friendship Garden, Kids Class 10:30 to noon

April 24th Sat-25th Sun (setup on Apr 22nd & 23rd, teardown pm 25th)
 SDBC Spring Show

May 2nd Sunday (Moved due to Mother's day on the 9th)
 SDBC mtg at Wild Animal Park

Sunday, February 14th 2010
 Balboa Park, Room 101
 Casa Del Prado

Meeting Agenda

9:00 am	Beginner's Class	Room 104
9:15 am	Library Opens	Room 104
	Intermediate Class	Room 101
10:30 am	Business Mtg	Room 101
11:00 am	John Wong Bonsai Demo	Room 101
12:00 am	Lunch	